

**Metes and Bounds Description
of Proposed Lot 1**

Commencing after a bearing of 270°0' for a distance of 124.974 metres from the North Western corner of Lot 4 on RP91130, Parish of Caboolture,
thence at a bearing of 180°0' for a distance of 7.983 metres
thence at a bearing of 225°59'15" for a distance of 12.327 metres
thence at a bearing of 234°24'55" for a distance of 7.983 metres
thence at a bearing of 245°52'25" for a distance of 18.379 metres
thence at a bearing of 357°51'10" for a distance of 7.279 metres
thence at a bearing of 5°38'25" for a distance of 21.535 metres
thence at a bearing of 90°0' for a distance of 30.289 metres
to the point of commencement and containing
an area of 634m² more or less.



Scale 1:250

Approvals

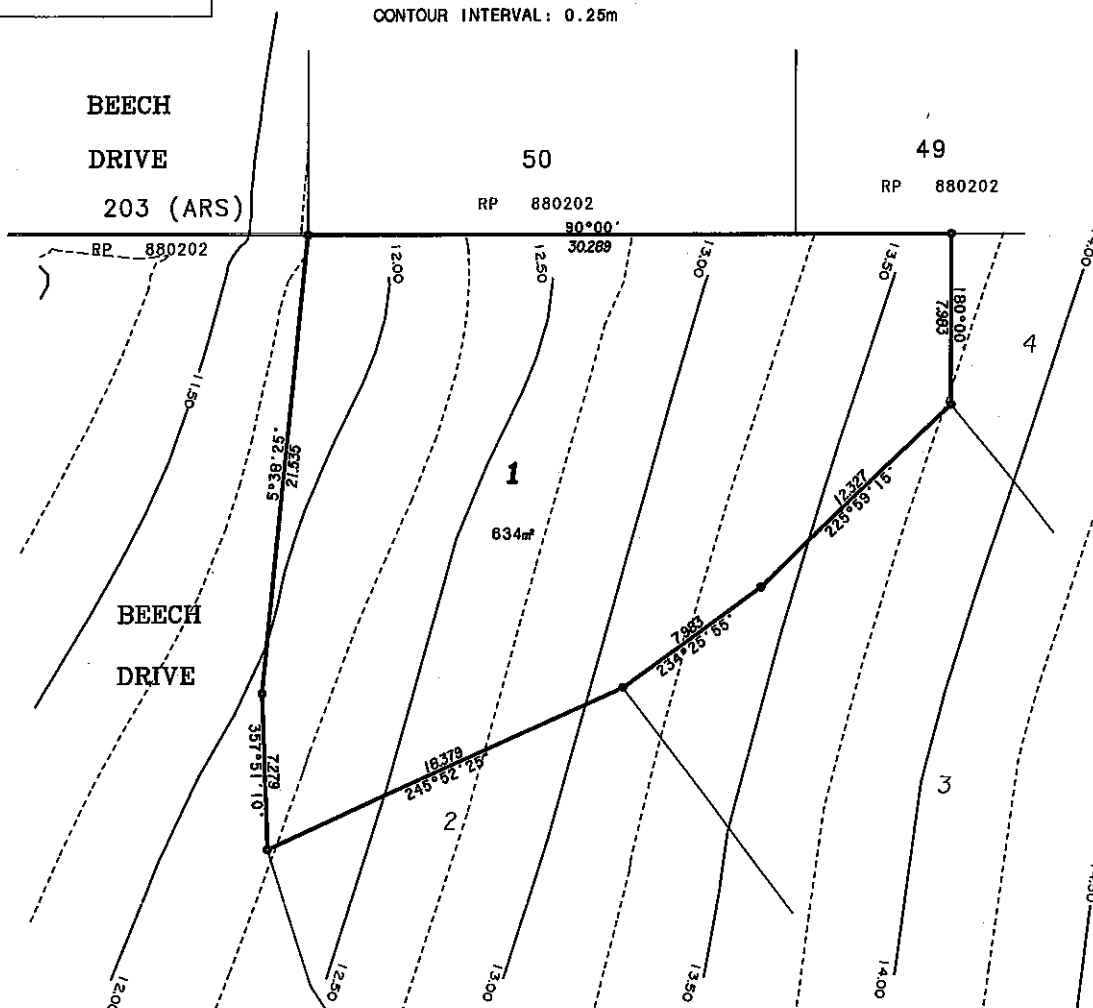
This plan illustrates proposed lot 1 as approved by Marston Bay Regional Council Permit number BAL-2004-3010 and in accordance with Engineering plan numbers 07-138-01(C), 07-138-02(B), 07-138-03(K) - 04(K), 07-138-05(B), 07-138-06(A), 07-138-07(B) - 13(B), 07-138-14(A), 07-138-15(B), 07-138-20(K) - 21(C), 07-138-22(B) - 23(B) prepared by KIN GROUP PTY LTD.

Notes

1. Contours and levels shown on this plan were taken before construction.
2. Approved engineering plans illustrate approximate extent of "cut and fill" batters to be created across the frontage of proposed Lot 1 and final lot levels.
3. All areas and dimensions are approximate only and are subject to alteration upon Council negotiation, Design and Final Survey.



CONTOUR INTERVAL: 0.25m



DISCLOSURE PLAN

PROPOSED LOT 1
THE MEADOWS
MORAYFIELD

MURRAY & ASSOCIATES
(QLD) PTY LTD A/N 075 543 154
CONSULTING SURVEYORS



LAND & ENGINEERING SURVEYORS,
PLANNERS

CABOOLTURE OFFICE: 5/75 King St, Caboolture
PO Box 377, Caboolture 4510

PH 54951478 FAX 54951729

IMPORTANT NOTE: This plan has been produced for the purpose of allowing the sale of freehold and leasehold land (proposed allotments) prior to the sealing of survey plans. It should be noted that variations may arise between this disclosure plan and the sealed plan of survey. This plan is based on an approved plan of subdivision and is intended to be a true representation of this proposed allotment.

PARISH CABOOLTURE	COUNTY STANLEY	ORIGPOR GV	LOCAL GOVT. MERC	CLIENT DODMARK PTY LTD	SCALE 1:250	AT A3	1 of 1
LEVEL DATUM AHMS OPM No 107268 RL 10.994m AHD	CCAD File No 45355 ***	DRAWN CRA	CHECKED CRA	PROJECT THE MEADOWS	PLAN No A3/ 45355	-DP01	
	DATE 1/04/08	DATE 19-6-08					

**Metes and Bounds Description
of Proposed Lot 2**

Commencing after a bearing of 250°30'30" for a distance of 130.49 metres from the North Western corner of Lot 4 on RP91130, Parish of Caboolture,
 thence at a bearing of 234°47'55" for a distance of 11.77 metres
 thence at a bearing of 248°45'35" for a distance of 4.29 metres
 thence at a bearing of 276°52'40" for a distance of 4.29 metres
 thence at a bearing of 304°59'40" for a distance of 4.29 metres
 thence at a bearing of 319°03'10" for a distance of 10.192 metres
 thence at a bearing of 326°48'45" for a distance of 7.279 metres
 thence at a bearing of 342°20' for a distance of 6.732 metres
 thence at a bearing of 65°52'25" for a distance of 18.379 metres
 thence at a bearing of 142°44'50" for a distance of 13.374 metres
 thence at a bearing of 141°45'15" for a distance of 14.905 metres
 to the point of commencement and containing
 an area of 589m² more or less.



Scale 1:250

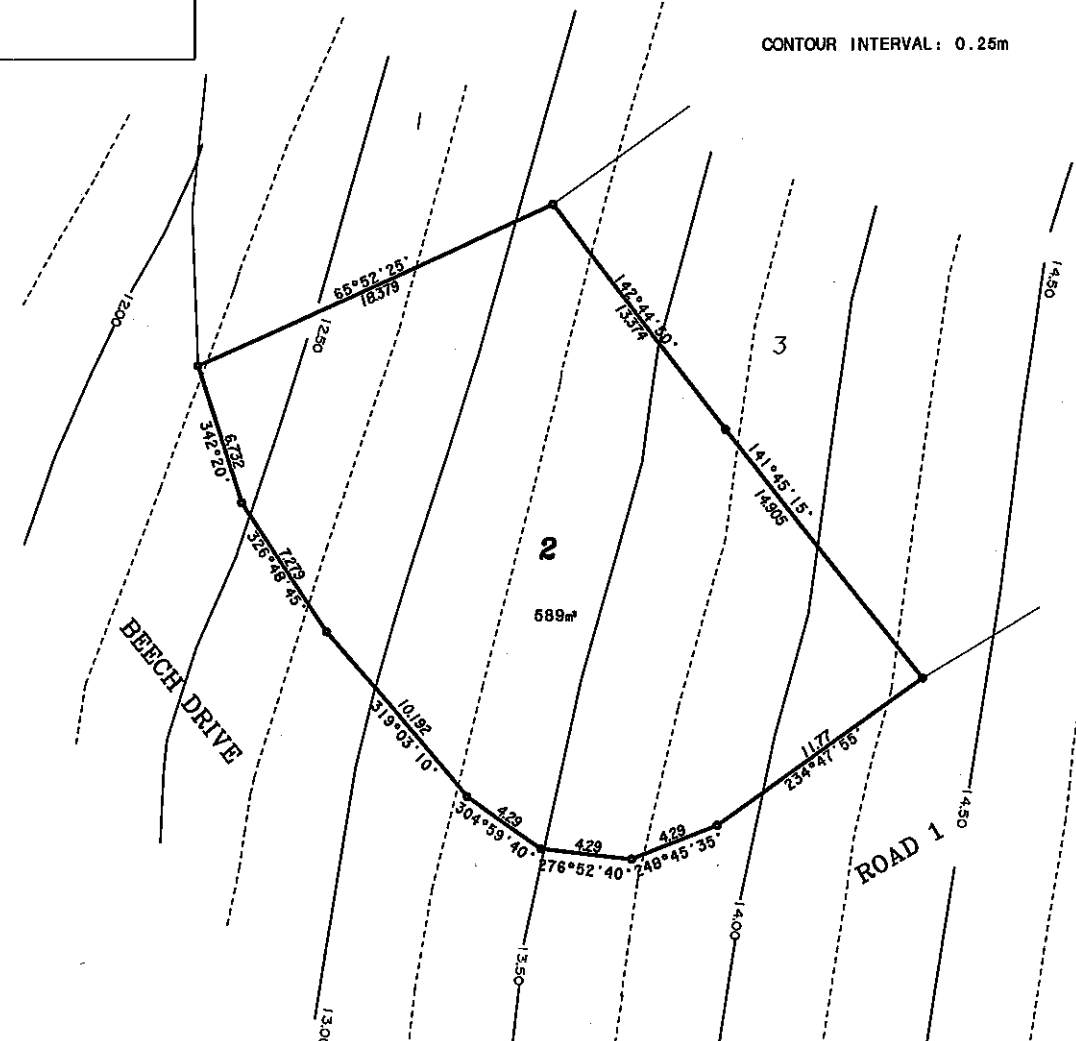
Approvals:

This plan illustrates proposed lot 2 as approved by Moreton Bay Regional Council Permit number RAL-2004-3010 and in accordance with Engineering plan numbers 07-138-01(C), 07-138-02(E), 07-138-03(C) - 04(C), 07-138-05(E), 07-138-06(A), 07-138-07(B) - 13(B), 07-138-14(A), 07-138-15(B), 07-138-20(C) - 21(C), 07-138-22(E) - 23(B) prepared by IKN GROUP PTY LTD.

Notes:

1. Contours and levels shown on this plan were taken before construction.
2. Approved engineering plans illustrate approximate extent of 'cut and fill' to be created across the frontage of proposed Lot 2 and final lot levels.
3. All areas and dimensions are approximate only and are subject to alteration upon Council negotiation, Design and Final Survey.

CONTOUR INTERVAL: 0.25m



DISCLOSURE PLAN
 PROPOSED LOT 2
 THE MEADOWS
 MORAYFIELD

MURRAY & ASSOCIATES
 (QLD) PTY LTD ACN 075 643 154
CONSULTING SURVEYORS
 LAND & ENGINEERING SURVEYORS,
 PLANNERS
 CABOOLTURE OFFICE: 5/75 King St, Caboolture
 PO Box 377, Caboolture 4510 PH 54951478 FAX 54951729



IMPORTANT NOTE: This plan has been produced for the purpose of allowing the sale of freehold and leasehold land (proposed allotments) prior to the sealing of survey plans. It should be noted that variations may arise between this disclosure plan and the sealed plan of survey. This plan is based on an approved plan of subdivision and is intended to be a true representation of this proposed allotment.

PARISH CABOOLTURE	COUNTY STANLEY	ORIG.PORL. 6V	LOCAL GOVT. MBRC	CLIENT DODMARK PTY LTD	SCALE 1:250 AT A3	1 of 1
LEVEL DATUM AHD CPM No 10725B RL 10.894m AHD	CCAD File No 45355 ***	DRAWN ORA	CHECKED ORA	PROJECT THE MEADOWS	PLAN No A3/ 45355	-DP02
	DATE 1/04/08		DATE 12-6-08			

**Metes and Bounds Description
of Proposed Lot 3**

Commencing after a bearing of 250°30'30" for a distance of 130.49 metres from the North Western corner of Lot 4 on RP91130, Parish of Caboolture,
 thence at a bearing of 321°45'15" for a distance of 14.905 metres
 thence at a bearing of 322°44'50" for a distance of 13.374 metres
 thence at a bearing of 54°25'55" for a distance of 7.993 metres
 thence at a bearing of 45°59'15" for a distance of 12.327 metres
 thence at a bearing of 141°31'10" for a distance of 13.456 metres
 thence at a bearing of 145°43'35" for a distance of 20.0 metres
 thence at a bearing of 256°45'45" for a distance of 1.0 metres
 thence at a bearing of 247°56'20" for a distance of 9.62 metres
 thence at a bearing of 239°06'50" for a distance of 9.07 metres
 to the point of commencement and containing
 an area of 604m² more or less.



Scale 1:250

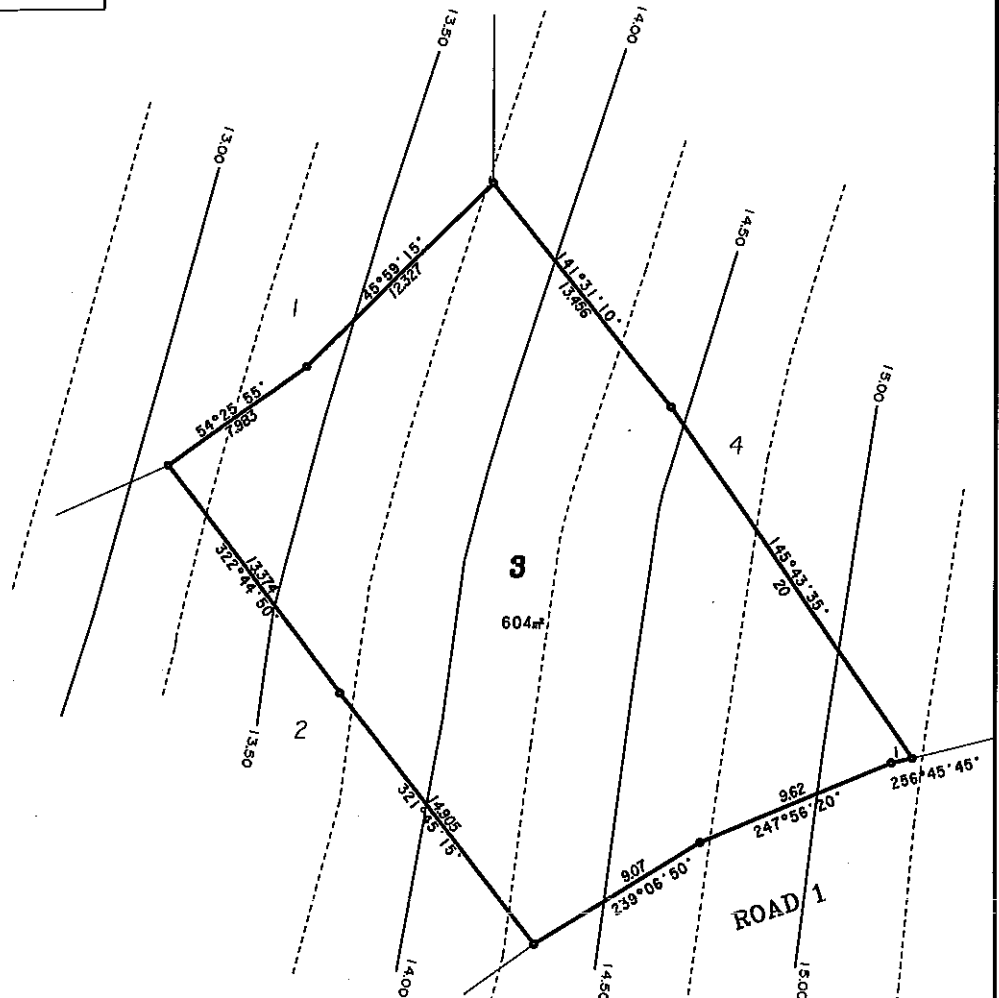
Approvals:

This plan illustrates proposed lot 3 as approved by Moreton Bay Regional Council Permit number PAL-2004-3010 and in accordance with Engineering plan numbers 07-138-01(C), 07-138-02(B), 07-138-03(C) - 04(C), 07-138-05(B), 07-138-06(A), 07-138-07(B) - 13(B), 07-138-14(A), 07-138-15(B), 07-138-20(C) - 21(C), 07-138-22(B) - 23(B) prepared by KN GROUP PTY LTD.

Notes:

1. Contours and levels shown on this plan were taken before construction.
2. Approved engineering plans illustrate approximate extent of 'cut and fill' buffers to be created across the frontage of proposed Lot 3 and final lot levels.
3. All areas and dimensions are approximate only and are subject to alteration upon Council negotiation, Design and Final Survey.

CONTOUR INTERVAL: 0.25m



DISCLOSURE PLAN

PROPOSED LOT 3
 THE MEADOWS
 MORAYFIELD

MURRAY & ASSOCIATES
 (QLD) PTY LTD AG# 075 543 154
CONSULTING SURVEYORS

LAND & ENGINEERING SURVEYORS,
 PLANNERS

CABOOLTURE OFFICE: 5/75 King St, Caboolture
 PO Box 377, Caboolture 4510

PH 54951478 FAX 54951729



IMPORTANT NOTE: This plan has been produced for the purpose of allowing the sale of freehold and leasehold land (proposed allotments) prior to the sealing of survey plans. It should be noted that variations may arise between this disclosure plan and the sealed plan of survey. This plan is based on an approved plan of subdivision and is intended to be a true representation of this proposed allotment.

PARISH CABOOLTURE	COUNTY STANLEY	ORIG.PORL 6V	LOCAL GOVT. MBRC
LEVEL DATUM AHD# OPM No 107268 RL 10.994m AHD	CCAD File No 45355 DWG File No DWG DWG003	DRAWN CRA DATE 1/04/08	CHECKED CRA DATE 19-6-08

CLIENT DODMARK PTY LTD
PROJECT THE MEADOWS

SCALE 1:250	AT A3	1 of 1
PLAN No A3/ 45355	-DP03	

**Metes and Bounds Description
of Proposed Lot 4**

Commencing after a bearing of 270°0' for a distance of 124.974 metres from the North Western corner of Lot 4 on RP91130, Parish of Caboolture,
thence at a bearing of 90°0' for a distance of 24.973 metres
thence at a bearing of 167°26' for a distance of 12.087 metres
thence at a bearing of 169°45'50" for a distance of 21.353 metres
thence at a bearing of 266°35'15" for a distance of 3.38 metres
thence at a bearing of 256°45'45" for a distance of 8.62 metres
thence at a bearing of 325°43'35" for a distance of 20.0 metres
thence at a bearing of 321°31'10" for a distance of 13.456 metres
thence at a bearing of 0°0' for a distance of 7.983 metres
to the point of commencement and containing
an area of 709m² more or less.



Scale 1:250

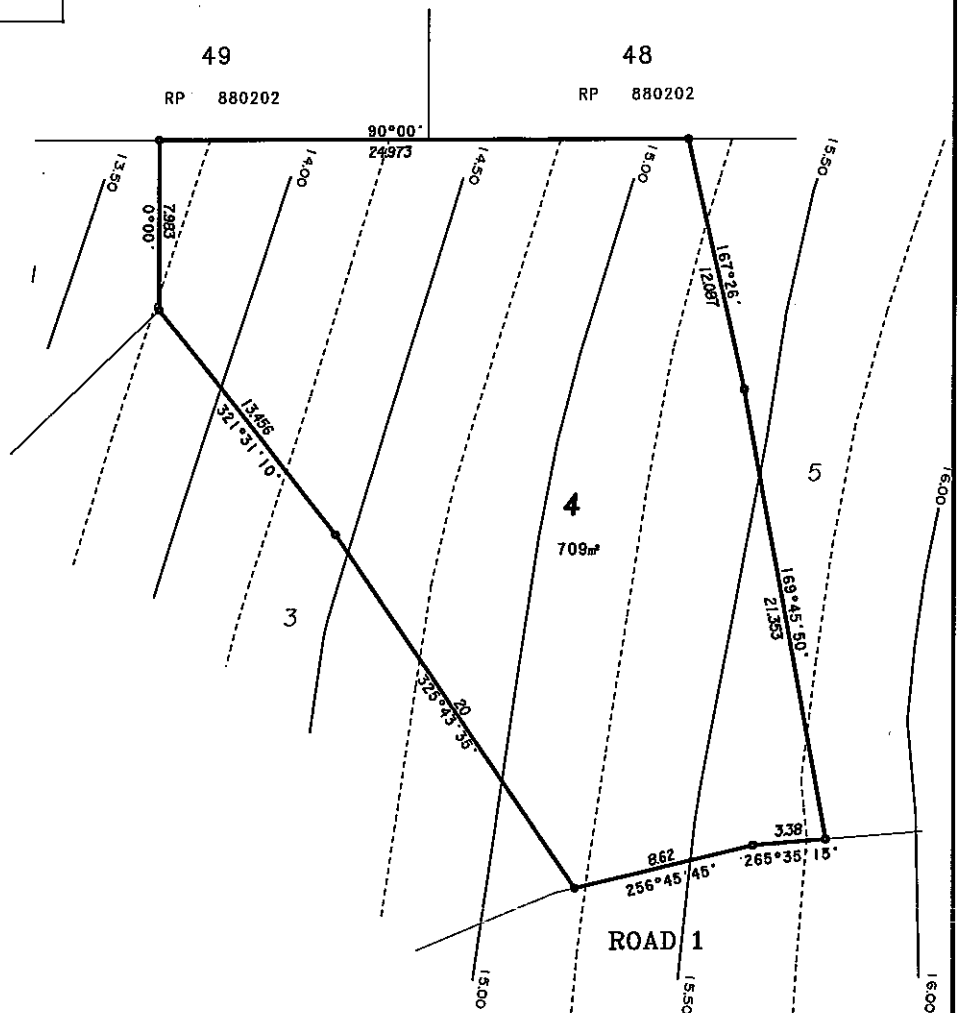
Approvals:

This plan illustrates proposed lot 4 as approved by Moreton Bay Regional Council Permit number RAL-2004-3010 and in accordance with Engineering plan numbers 07-138-01(C), 07-138-02(B), 07-138-03(C) - 04(C), 07-138-05(B), 07-138-06(A), 07-138-07(B) - 13(B), 07-138-14(A), 07-138-15(B), 07-138-20(C) - 21(C), 07-138-22(B) - 23(B) prepared by KN GROUP PTY LTD.

Notes:

1. Contours and levels shown on this plan were taken before construction.
2. Approved engineering plans illustrate appropriate extent of 'cut and fill' to be crossed across the frontage of proposed Lot 4 and final lot levels.
3. All areas and dimensions are approximate only and are subject to alteration upon Council negotiation, Design and Final Survey.

CONTOUR INTERVAL: 0.25m



DISCLOSURE PLAN

PROPOSED LOT 4
THE MEADOWS
MORAYFIELD

MURRAY & ASSOCIATES
(QLD) PTY LTD
CONSULTING SURVEYORS



LAND & ENGINEERING SURVEYORS,
PLANNERS

CABOOLTURE OFFICE: 5/75 King St, Caboolture
PO Box 377, Caboolture 4510

PH 54951478 FAX 54951729

IMPORTANT NOTE: This plan has been produced for the purpose of allowing the sale of freehold and leasehold land (proposed allotments) prior to the sealing of survey plans. It should be noted that variations may arise between this disclosure plan and the sealed plan of survey. This plan is based on an approved plan of subdivision and is intended to be a true representation of this proposed allotment.

PARISH CABOOLTURE	COUNTY STANLEY	ORIGPOR. BY	LOCAL GOVT. MBRC	CLIENT DODMARK PTY LTD	SCALE 1:250	AT A3	1 of 1
LEVEL DATUM AHD OPM No 107268 RL 10.994m AHD	CCAD File No 45355 .*** DWG File No DWG DW60004	DRAWN CRA	CHECKED CRA	PROJECT THE MEADOWS	PLAN No A3/ 45355	-DP04	
	DATE 1/04/08	DATE 19-6-08					

**Mets and Bounds Description
of Proposed Lot 5**

Commencing after a bearing of 270°0' for a distance of 78.046 metres from the North Western corner of Lot 4 on RP91130, Parish of Caboolture,
thence of a bearing of 175°32'15" for a distance of 32.079 metres
thence of a bearing of 268°14'45" for a distance of 12.1 metres
thence of a bearing of 265°35'15" for a distance of 5.95 metres
thence of a bearing of 349°45'50" for a distance of 21.353 metres
thence at a bearing of 347°26' for a distance of 12.087 metres
thence of a bearing of 90°00' for a distance of 21.955 metres
to the point of commencement and containing
an area of 643m² more or less.



Scale 1:250

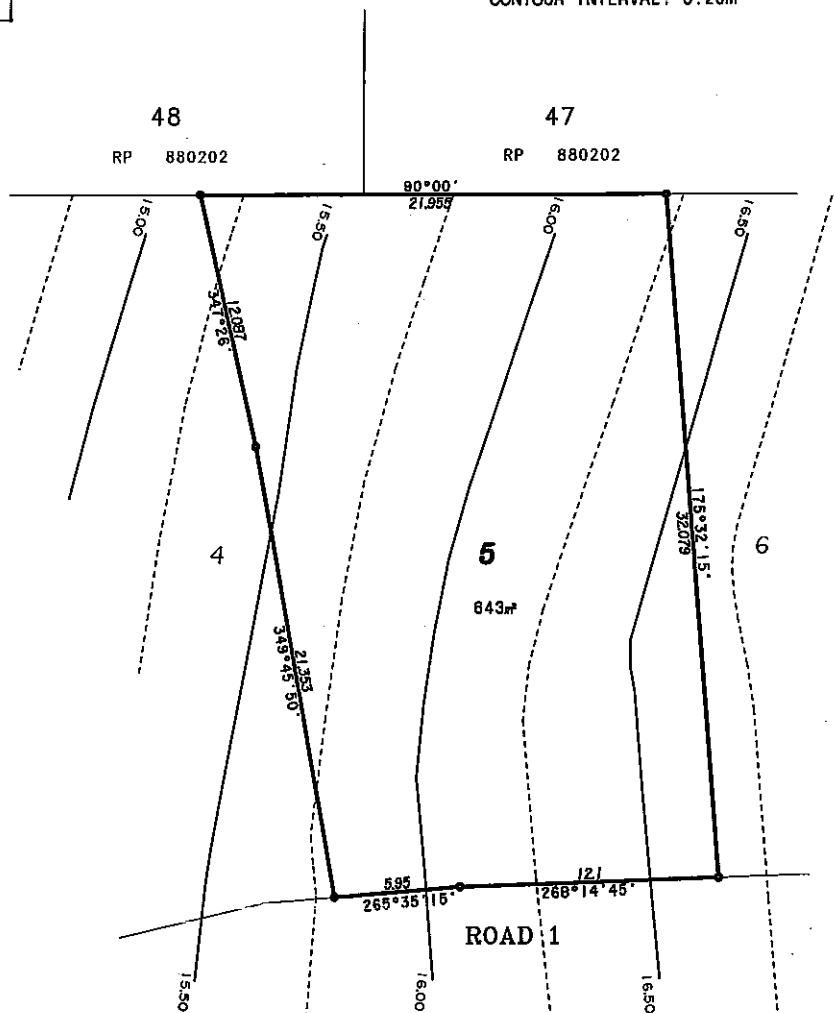
Approvals:

This plan illustrates proposed lot 5 as approved by Moray Bay Regional Council Permit number RAL-2004-3010 and in accordance with Engineering plan numbers 07-138-01(C), 07-138-02(B), 07-138-03(C) - 04(C), 07-138-05(B), 07-138-06(A), 07-138-07(B) - 13(B), 07-138-14(A), 07-138-15(B), 07-138-20(G) - 21(C), 07-138-22(B) - 23(B) prepared by KN GROUP PTY LTD.

Notes:

1. Contours and levels shown on this plan were taken before construction.
2. Approved engineering plans illustrate approximate extent of 'cut and fill' barriers to be created across the frontage of proposed Lot 5 and final lot levels.
3. All areas and dimensions are approximate only and are subject to alteration upon Council negotiation, Design and Final Survey.

CONTOUR INTERVAL: 0.26m



DISCLOSURE PLAN

PROPOSED LOT 5
THE MEADOWS
MORAYFIELD

MURRAY & ASSOCIATES
(QLD) PTY LTD ACN 075 943 154
CONSULTING SURVEYORS

LAND & ENGINEERING SURVEYORS,
PLANNERS

CABOOLTURE OFFICE: 5/75 King St, Caboolture
PO Box 377, Caboolture 4510

PH 54951478 FAX 54951729



IMPORTANT NOTE: This plan has been produced for the purpose of allowing the sale of freehold and leasehold land (proposed allotments) prior to the sealing of survey plans. It should be noted that variations may arise between this disclosure plan and the sealed plan of survey. This plan is based on an approved plan of subdivision and is intended to be a true representation of this proposed allotment.

PARISH CABOOLTURE	COUNTY STANLEY	ORIG.POR. SV	LOCAL GOVT. CSC	CLIENT DODMARK PTY LTD	SCALE 1:250 AT A3	1 of 1
LEVEL DATUM AHD/01 OPM No 107268 RL 10.994m AHD	CCAD File No 45355 *** DWG File No DWG DW0005	DRAWN CRA	CHECKED CRA	PROJECT THE MEADOWS	PLAN No A3/ 45355	-DPO5
	DATE 1/04/08	DATE 19-6-08				

**Metes and Bounds Description
of Proposed Lot 6**

Commencing after a bearing of 270°0' for a distance of 78.046 metres from the North Western corner of Lot 4 on RP91130, Parish of Caboolture,
thence at a bearing of 90°00' for a distance of 25.123 metres
thence at a bearing of 195°55'25" for a distance of 29.454 metres
thence at a bearing of 251°06'30" for a distance of 10.899 metres
thence at a bearing of 268°14'45" for a distance of 4.236 metres
thence at a bearing of 355°32'15" for a distance of 32.079 metres
to the point of commencement and containing
an area of 600m² more or less.



Scale 1:250

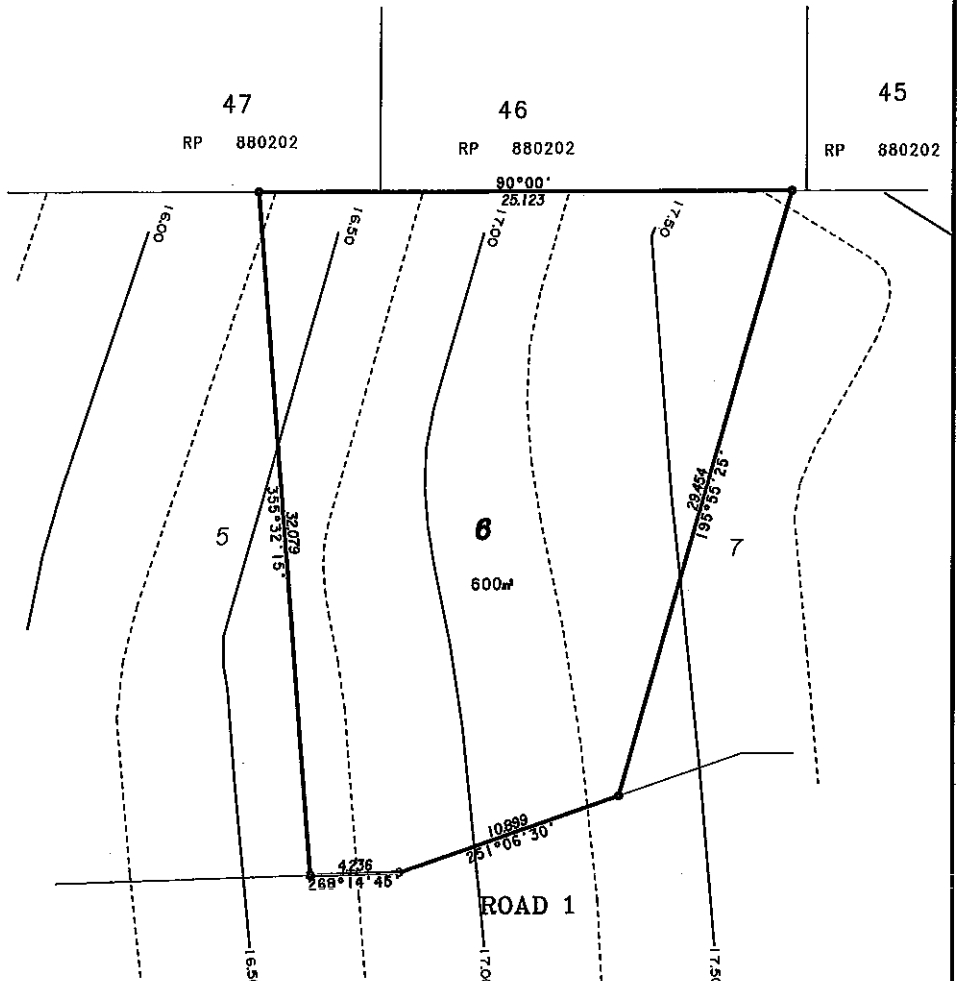
Approvals

This plan illustrates proposed lot 6 as approved by Moreton Bay Regional Council Plan number 34L-2304-3010 and in accordance with Engineering plan numbers 07-138-01(C), 07-138-02(B), 07-138-03(C) - 04(C), 07-138-05(B), 07-138-06(A), 07-138-07(B) - 13(B), 07-138-14(A), 07-138-15(B), 07-138-20(C) - 21(C), 07-138-22(B) - 23(B) prepared by KN GROUP PTY LTD.

Notes:

1. Contours and levels shown on this plan were taken before construction.
2. Approved engineering plans illustrate approximate extent of 'cut and fill' buffers to be created across the frontage of proposed Lot 6 and final lot levels.
3. All areas and dimensions are approximate only and are subject to alteration upon Council negotiation, Design and Final Survey.

CONTOUR INTERVAL: 0.25m



DISCLOSURE PLAN

PROPOSED LOT 6
THE MEADOWS
MORAYFIELD

MURRAY & ASSOCIATES
(QLD) PTY LTD
CONSULTING SURVEYORS

LAND & ENGINEERING SURVEYORS,
PLANNERS

CABOOLTURE OFFICE: 5/75 King St, Caboolture
PO Box 377, Caboolture 4510

PH 54951478 FAX 54951729



IMPORTANT NOTE: This plan has been produced for the purpose of allowing the sale of freehold and leasehold land (proposed allotments) prior to the sealing of survey plans. It should be noted that variations may arise between this disclosure plan and the sealed plan of survey. This plan is based on an approved plan of subdivision and is intended to be a true representation of this proposed allotment.

PARISH CABOOLTURE	COUNTY STANLEY	ORIGPOR GV	LOCAL GOVT. MERC	CLIENT DODMARK PTY LTD	SCALE 1:250	AT A3	1 of 1
LEVEL DATUM AHD OPM No 10726B RL 10.994m AHD	CCAD File No 45355 .*** DWG File No DWG DWG006	DRAWN ORA	CHECKED ORA	PROJECT THE MEADOWS	PLAN No A3/ 45355	-DPO6	
	DATE 1/04/08		DATE 19-6-08				

**Metes and Bounds Description
of Proposed Lot 7**

Commencing after a bearing of 270°0' for a distance of 27.951 metres from the North Western corner of Lot 4 on RP91130, Parish of Caboolture,
thence at a bearing of 230°02'25" for a distance of 41.03 metres
thence at a bearing of 270°00' for a distance of 5.909 metres
thence at a bearing of 251°06'30" for a distance of 6.091 metres
thence at a bearing of 15°55'25" for a distance of 29.454 metres
thence at a bearing of 90°00' for a distance of 35.04 metres
to the point of commencement and containing
an area of 613m² more or less.



Scale 1:250

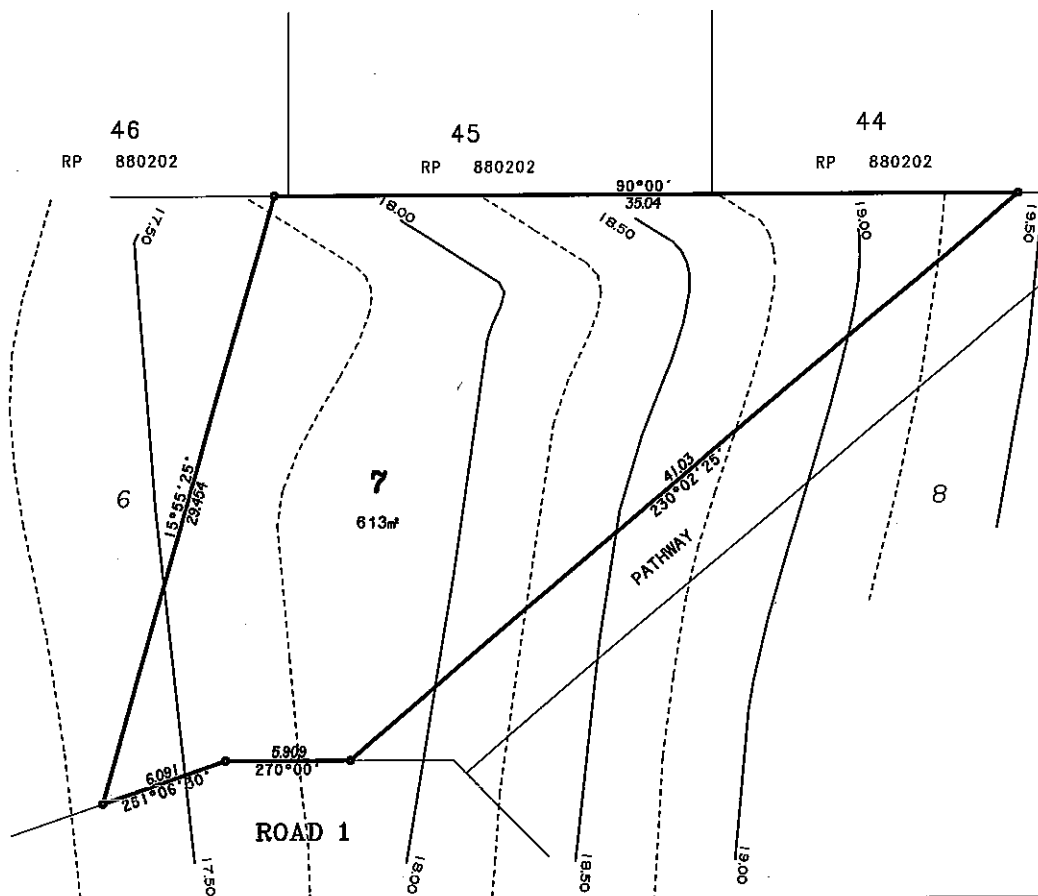
Approvals:

This plan illustrates proposed lot 7 as approved by Moreton Bay Regional Council Permit number RAL-2004-3010 and in accordance with Engineering plan numbers 07-138-01(C), 07-138-02(B), 07-138-03(C) - 04(C), 07-138-05(B), 07-138-06(A), 07-138-07(B) - 13(B), 07-138-14(A), 07-138-15(B), 07-138-20(C) - 21(C), 07-138-22(B) - 23(B) prepared by KN GROUP PTY LTD.

Notes:

1. Contours and levels shown on this plan were taken before construction.
2. Approved engineering plans illustrate approximate extent of 'cut and fill' matters to be created across the frontage of proposed Lot 7 and final lot levels.
3. All areas and dimensions are approximate only and are subject to alteration upon Council negotiation, Design and Find Survey.

CONTOUR INTERVAL: 0.25m



DISCLOSURE PLAN

PROPOSED LOT 7
THE MEADOWS
MORAYFIELD

MURRAY & ASSOCIATES
(QLD) PTY LTD
CONSULTING SURVEYORS

LAND & ENGINEERING SURVEYORS,
PLANNERS

CABOOLTURE OFFICE: 5/75 King St, Caboolture
PO Box 377, Caboolture 4510

ACN 075 543 154

PH 54951478 FAX 54951729



IMPORTANT NOTE: This plan has been produced for the purpose of allowing the sale of freehold and leasehold land (proposed allotments) prior to the sealing of survey plans. It should be noted that variations may arise between this disclosure plan and the sealed plan of survey. This plan is based on an approved plan of subdivision and is intended to be a true representation of this proposed allotment.

PARISH CABOOLTURE	COUNTY STANLEY	ORIG.POR. GV	LOCAL GOVT. MERIC	CLIENT DODMARK PTY LTD	SCALE 1:250	AT A3	1 of 1
LEVEL DATUM AHD0 OPM No 107258 RL 10394m AHD.D	CCAD File No 45355	DRAWN GRA	CHECKED CRA	PROJECT THE MEADOWS	PLAN No A3/ 45355	-DP07	
	DWG File No DWG DWG007	DATE 1/04/08	DATE 13-6-08				

**Metes and Bounds Description
of Proposed Lot 8**

Commencing after a bearing of 193°02'40" for a distance of 27.951 metres from the North Western corner of Lot 4 on RP91130, Parish of Coboolture,
thence at a bearing of 253°50'40" for a distance of 31.802 metres
thence at a bearing of 0°00' for a distance of 2.111 metres
thence at a bearing of 315°00' for a distance of 9.889 metres
thence at a bearing of 80°02'23" for a distance of 35.78 metres
thence at a bearing of 90°00' for a distance of 15.49 metres
thence at a bearing of 193°02'40" for a distance of 23.857 metres to the point of commencement and containing on area of 778m² more or less.

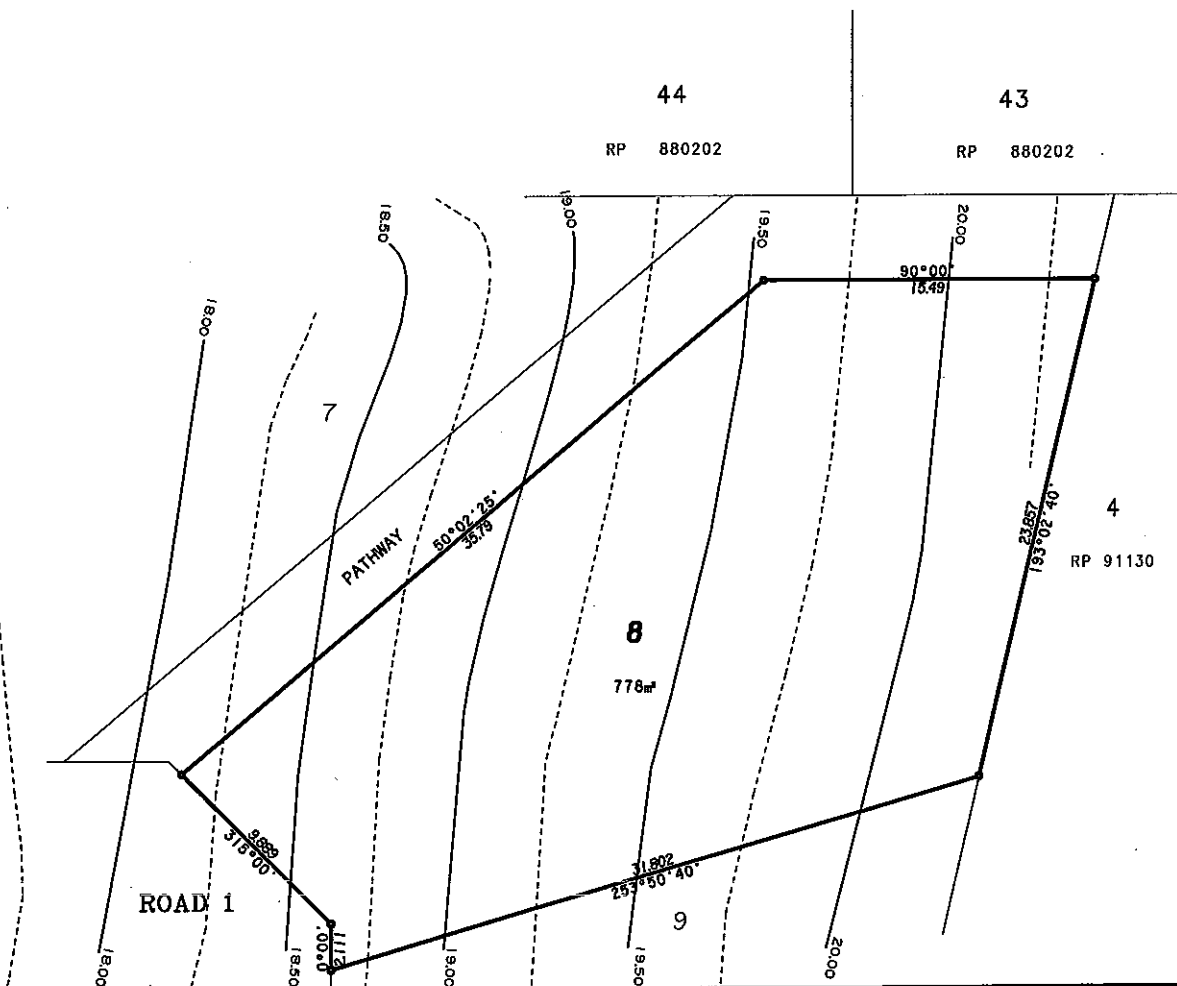


Scale 1:250

Approvals
This plan illustrates proposed lot 8 as approved by Moreton Bay Regional Council Permit number RAL-2004-3010 and in accordance with Engineering plan numbers 07-138-01(C), 07-138-02(B), 07-138-03(C) - 04(C), 07-138-05(B), 07-138-06(A), 07-138-07(B) - 13(B), 07-138-14(A), 07-138-15(B), 07-138-20(C) - 21(C), 07-138-22(B) - 23(B) prepared by KN GROUP PTY LTD.

- Notes**
- Contours and levels shown on this plan were taken before construction.
 - Approved engineering plans illustrate approximate extent of cut and fill barriers to be created across the frontage of proposed Lot 8 and final lot levels.
 - All areas and dimensions are approximate only and are subject to alteration upon Council negotiation, Design and Final Survey.

CONTOUR INTERVAL: 0.25m



DISCLOSURE PLAN
PROPOSED LOT 8
THE MEADOWS
MORAYFIELD

MURRAY & ASSOCIATES
(QLD) PTY LTD ACN 075 543 154
CONSULTING SURVEYORS
LAND & ENGINEERING SURVEYORS,
PLANNERS
COBOLTURE OFFICE: 5/75 King St, Cobolture
PO Box 377, Cobolture 4510 PH 54951478 FAX 54951729

IMPORTANT NOTE: This plan has been produced for the purpose of allowing the sale of freehold and leasehold land (proposed allotments) prior to the sealing of survey plans. It should be noted that variations may arise between this disclosure plan and the sealed plan of survey. This plan is based on an approved plan of subdivision and is intended to be a true representation of this proposed allotment.

PARISH COBOLTURE	COUNTY STANLEY	ORIGPOR GV	LOCAL GOVT. MERC	CLIENT DODMARK PTY LTD	SCALE 1:250	AT A3	1 of 1
LEVEL DATUM AHD OPM No 107268 RL 10394m AHD	CCAD File No 45355 ***	DRAWN CRA	CHECKED CRA	PROJECT THE MEADOWS	PLAN No A3/ 45355	-DP08	
	DWG File No DWG DWG0008	DATE 1/04/08	DATE 13-6-08				

**Metes and Bounds Description
of Proposed Lot 9**

Commencing after a bearing of 193°02'40" for a distance of 27.951 metres from the North Western corner of Lot 4 on RP91130, Parish of Caboolture,
thence at a bearing of 193°02'40" for a distance of 33.406 metres
thence at a bearing of 296°32'45" for a distance of 29.359 metres
thence at a bearing of 45°00' for a distance of 3.341 metres
thence at a bearing of 0°00' for a distance of 8.659 metres
thence at a bearing of 73°50'40" for a distance of 31.802 metres
to the point of commencement and containing
an area of 608m² more or less.



Scale 1:250

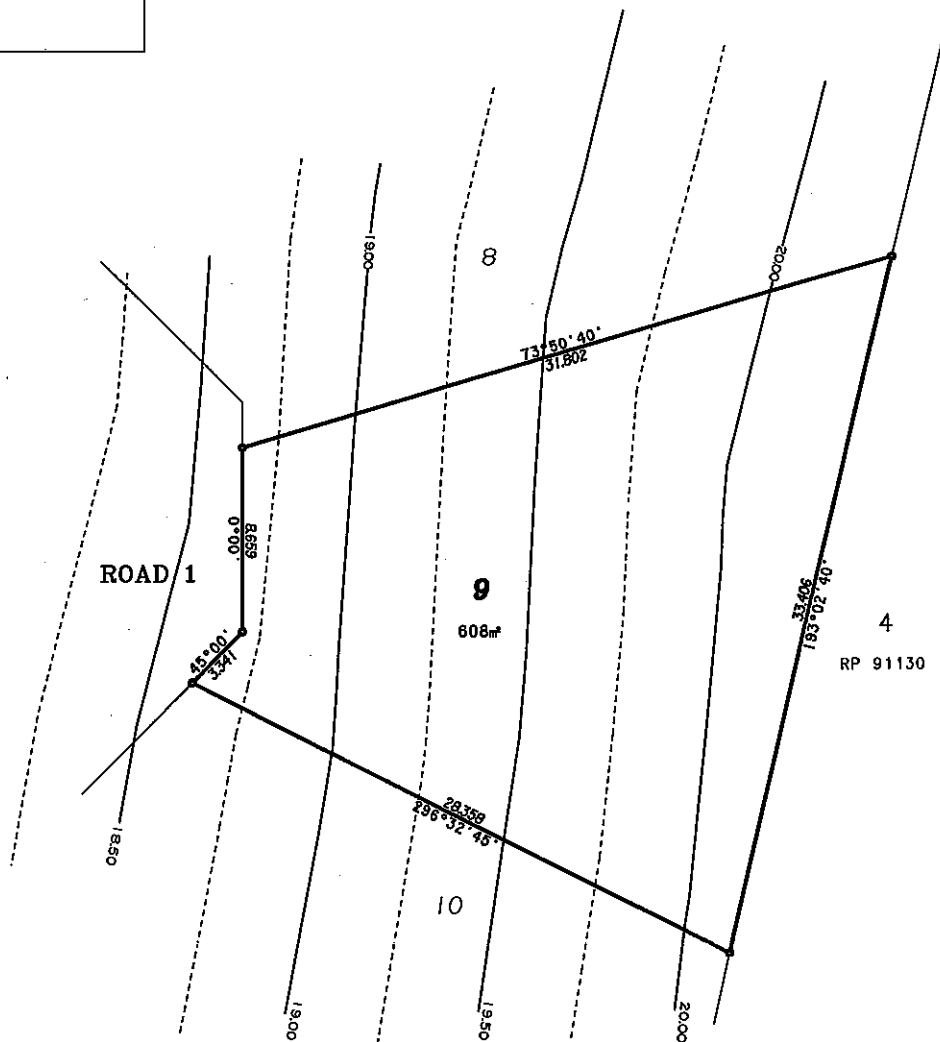
Approvals

This plan illustrates proposed lot 9 as approved by Moreton Bay Regional Council Permit number RAL-2004-3010 and in accordance with Engineering plan numbers 07-138-01IC, 07-138-02BI, 07-138-03CI - 04CI, 07-138-05BI, 07-138-06AI, 07-138-07BI - 13BI, 07-138-14AI, 07-138-15BI, 07-138-20CI - 21CI, 07-138-22BI - 23BI prepared by KN GROUP PTY LTD.

Notes:

1. Contours and levels shown on this plan were taken before construction.
2. Approved engineering plans illustrate appropriate extent of 'cut and fill' batters to be created across the frontage of proposed Lot 9 and the lot levels.
3. All areas and dimensions are approximate only and are subject to alteration upon Council reposition, Design and Final Survey.

CONTOUR INTERVAL: 0.25m



DISCLOSURE PLAN

PROPOSED LOT 9
THE MEADOWS
MORAYFIELD

MURRAY & ASSOCIATES
(QLD) PTY LTD ACN 075 543 154
CONSULTING SURVEYORS

LAND & ENGINEERING SURVEYORS,
PLANNERS

CABOOLTURE OFFICE: 5/75 King St, Caboolture
PO Box 377, Caboolture 4510 PH 54951478 FAX 54951729



IMPORTANT NOTE: This plan has been produced for the purpose of allowing the sale of freehold and leasehold land (proposed allotments) prior to the sealing of survey plans. It should be noted that variations may arise between this disclosure plan and the sealed plan of survey. This plan is based on an approved plan of subdivision and is intended to be a true representation of this proposed allotment.

PARISH CABOOLTURE	COUNTY STANLEY	ORIG.POR. GV	LOCAL GOVT. MERC	CLIENT DODMARK PTY LTD	SCALE 1:250 AT A3	1 of 1
LEVEL DATUM AHD OPM No 107268 FL 10.894m AHD	CCAD File No 45355 *** DWG File No DWG DW00009	DRAWN CRA	CHECKED <i>ort</i>	PROJECT THE MEADOWS	PLAN No A3/ 45355	-DP09
	DATE 1/04/08		DATE 19-6-08			

**Metes and Bounds Description
of Proposed Lot 10**

Commencing after a bearing of 193°02'40" for a distance of 61.357 metres from the North Western corner of Lot 4 on RP91130, Parish of Caboolture,
thence at a bearing of 193°02'40" for a distance of 19.449 metres
thence at a bearing of 270°0' for a distance of 11.008 metres
thence at a bearing of 323°06'10" for a distance of 32.97 metres
thence at a bearing of 90°00' for a distance of 4.57 metres
thence at a bearing of 45°00' for a distance of 7.43 metres
thence at a bearing of 116°32'45" for a distance of 28.358 metres
to the point of commencement and containing
an area of 612m² more or less.



Scale 1:250

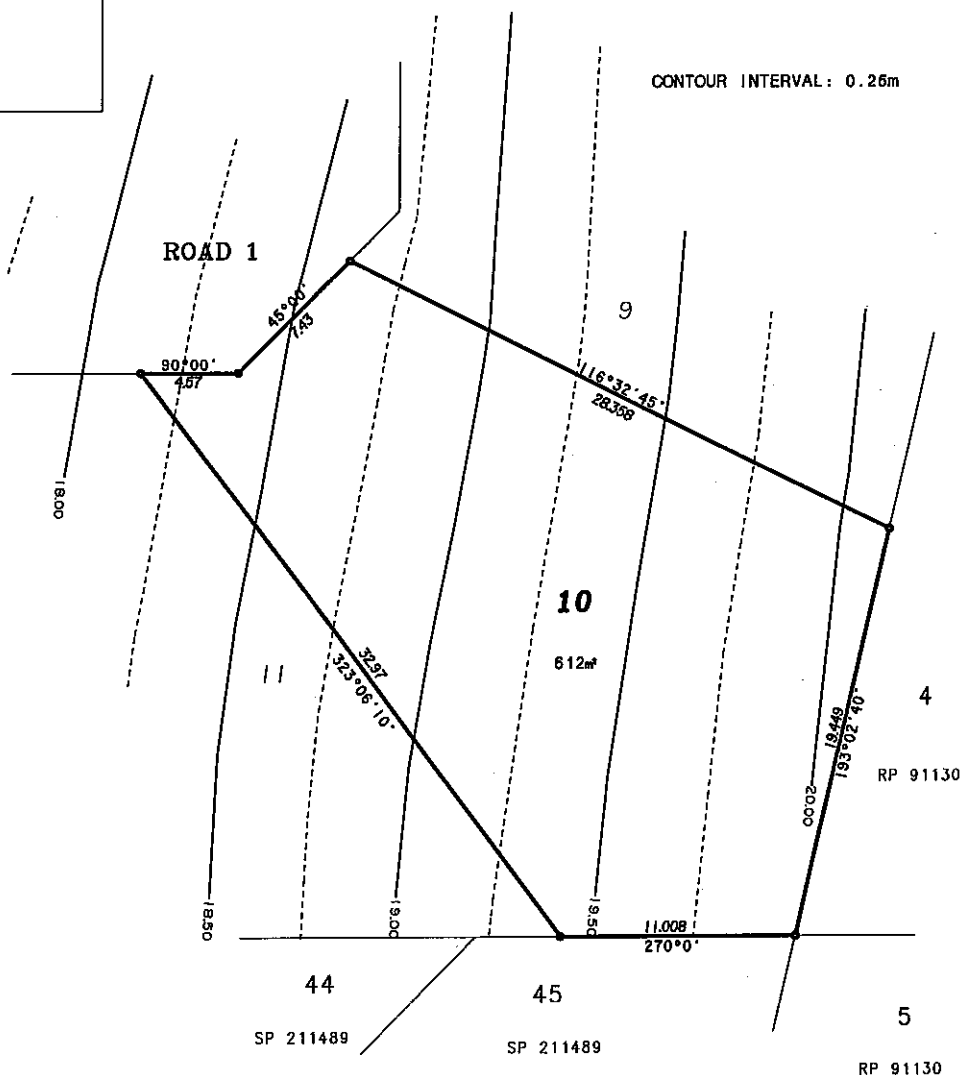
Approvals:

This plan illustrates proposed lot 10 as approved by Moreton Bay Regional Council Permit number RM-2004-3010 and in accordance with Engineering plan numbers 07-138-01(C), 07-138-02(B), 07-138-03(C) - 04(C), 07-138-05(B), 07-138-06(A), 07-138-07(B) - 13(B), 07-138-14(A), 07-138-15(B), 07-138-20(C) - 21(C), 07-138-22(B) - 23(B) prepared by KN GROUP PTY LTD.

Notes:

1. Contours and levels shown on this plan were taken before construction.
2. Approved engineering plans illustrate approximate extent of 'cut and fill' batters to be created across the frontage of proposed Lot 10 and final lot levels.
3. All areas and dimensions are approximate only and are subject to variation upon Council registration, Design and Final Survey.

CONTOUR INTERVAL: 0.25m



DISCLOSURE PLAN

PROPOSED LOT 10
THE MEADOWS
MORAYFIELD

MURRAY & ASSOCIATES
(QLD) PTY LTD AGN 075 543 154
CONSULTING SURVEYORS

LAND & ENGINEERING SURVEYORS,
PLANNERS

CABOOLTURE OFFICE, 5/75 King St, Caboolture
PO Box 377, Caboolture 4510

PH 54951478 FAX 54951729



IMPORTANT NOTE: This plan has been produced for the purpose of allowing the sale of freehold and leasehold land (proposed allotments) prior to the sealing of survey plans. It should be noted that variations may arise between this disclosure plan and the sealed plan of survey. This plan is based on an approved plan of subdivision and is intended to be a true representation of this proposed allotment.

PARISH CABOOLTURE	COUNTY STANLEY	ORIG.POR. SV	LOCAL GOVT. MBRC	CLIENT DODMARK PTY LTD	SCALE 1:250 AT A3	1 of 1
LEVEL DATUM ANZS OPM No 107268 RL 10.994m AHDD	CCAD File No 45355 DWG File No DWG0010	DRAWN CRA DATE 1/04/08	CHECKED <i>orb</i> DATE 19-6-08	PROJECT THE MEADOWS	PLAN No A3/ 45355	-0P10

**Metes and Bounds Description
of Proposed Lot 11**

Commencing after a bearing of 218°04' for a distance of 99.987 metres from the North Western corner of Lot 4 on RP91130, Parish of Caboolture,
thence at a bearing of 359°58'55" for a distance of 28.562 metres
thence at a bearing of 108°53'30" for a distance of 6.784 metres
thence at a bearing of 90°00' for a distance of 6.2 metres
thence at a bearing of 143°06'10" for a distance of 32.87 metres
thence at a bearing of 270°0' for a distance of 32.404 metres
to the point of commencement and containing
an area of 601m² more or less.



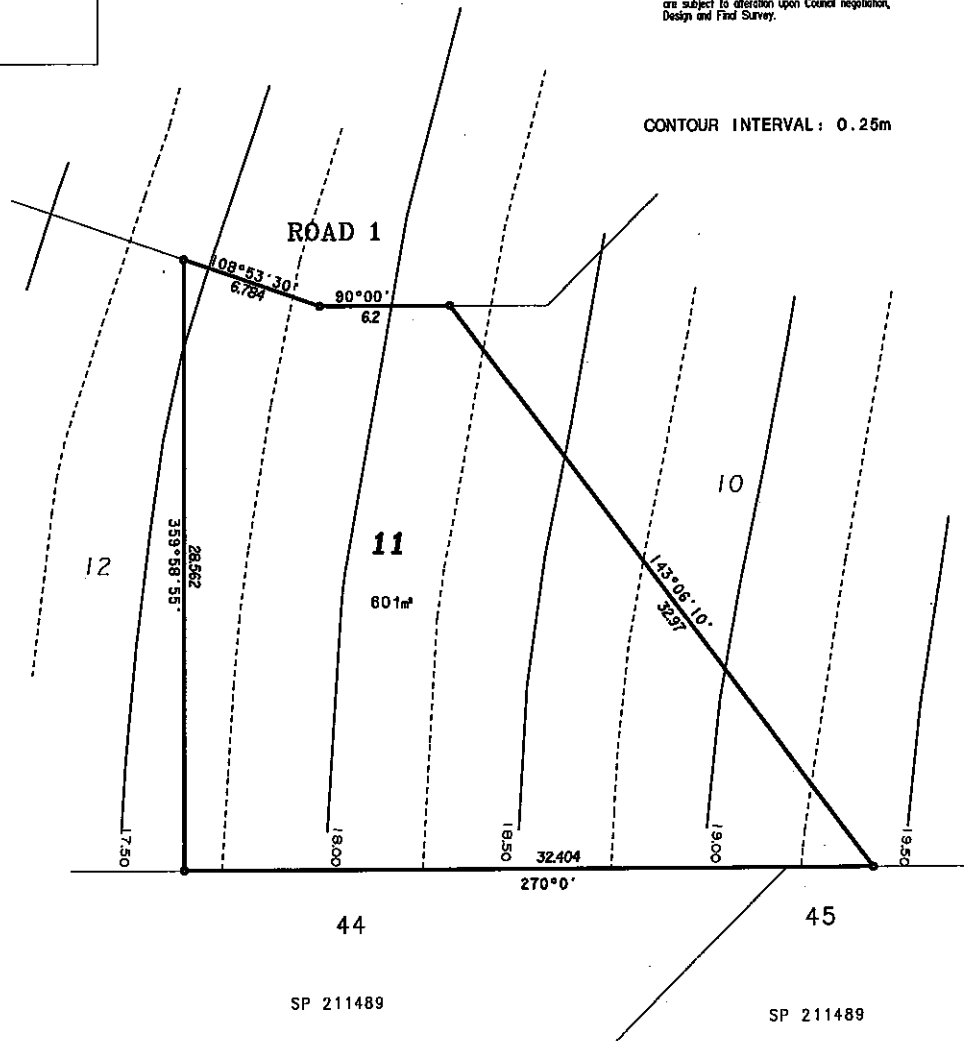
Scale 1:250

Approvals:
This plan illustrates proposed lot 11 as approved by Moreton Bay Regional Council Permit number RAL-2004-3010 and in accordance with Engineering plan numbers 07-138-01(C), 07-138-02(B), 07-138-03(C) - 04(C), 07-138-05(B), 07-138-06(A), 07-138-07(B) - 13(B), 07-138-14(A), 07-138-15(B), 07-138-20(C) - 21(C), 07-138-22(B) - 23(B) prepared by KH GROUP PTY LTD.

Notes:

1. Contours and levels shown on this plan were taken before construction.
2. Approved engineering plans illustrate approximate extent of 'cut' and 'fill' batters to be created across the frontage of proposed Lot 11 and final lot levels.
3. All areas and dimensions are approximate only and are subject to alteration upon Council negotiation, Design and Final Survey.

CONTOUR INTERVAL: 0.25m



DISCLOSURE PLAN

PROPOSED LOT 11
THE MEADOWS
MORAYFIELD

MURRAY & ASSOCIATES
(QLD) PTY LTD
CONSULTING SURVEYORS

LAND & ENGINEERING SURVEYORS,
PLANNERS

CABOOLTURE OFFICE: 5/75 King St, Caboolture
PO Box 377, Caboolture 4510

AKX 075 543 154



PH 54951478 FAX 54951729

IMPORTANT NOTE: This plan has been produced for the purpose of allowing the sale of freehold and leasehold land (proposed allotments) prior to the sealing of survey plans. It should be noted that variations may arise between this disclosure plan and the sealed plan of survey. This plan is based on an approved plan of subdivision and is intended to be a true representation of this proposed allotment.

PARISH CABOOLTURE	COUNTY STANLEY	ORIG.POR. 6V	LOCAL GOVT. MERC	CLIENT DODMARK PTY LTD	SCALE 1:250 AT A3	1 of 1
LEVEL DATUM AHD SPL No 107268 RL 10.984m AHD	OCAD File No 45355 ***	DRAWN ORA	CHECKED ORA	PROJECT THE MEADOWS	PLAN No A3/ 45355	-0P11
	DWG File No DWG DW00011	DATE 15/04/08	DATE 19-6-08			

**Metes and Bounds Description
of Proposed Lot 12**

Commencing after a bearing of 218°04' for a distance of 99.987 metres from the North Western corner of Lot 4 on RP91130, Parish of Caboolture,
thence at a bearing of 270°00' for a distance of 20.0 metres
thence at a bearing of 359°58'55" for a distance of 31.366 metres
thence at a bearing of 90°00' for a distance of 11.806 metres
thence at a bearing of 108°53'30" for a distance of 8.662 metres
thence at a bearing of 179°58'55" for a distance of 28.562 metres
to the point of commencement and containing
an area of 616m² more or less.



Scale 1:250

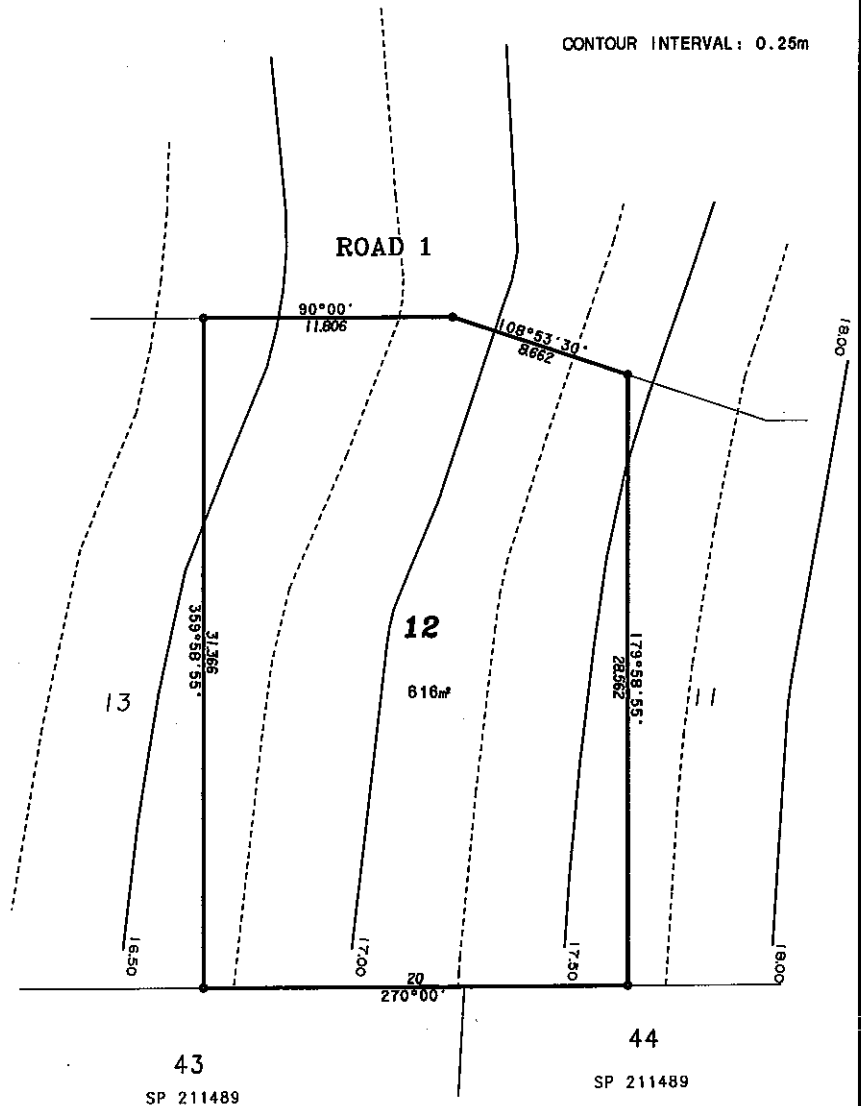
Approvals:

This plan illustrates proposed lot 12 as approved by Moray Bay Regional Council Permit number RAL-2004-3010 and in accordance with Engineering plan numbers 07-138-01(C), 07-138-02(B), 07-138-03(C) - 04(C), 07-138-05(B), 07-138-06(A), 07-138-07(B) - 13(B), 07-138-14(A), 07-138-15(B), 07-138-20(C) - 21(D), 07-138-22(B) - 23(B) prepared by KH GROUP PTY LTD.

Notes:

1. Contours and levels shown on this plan were taken before construction.
2. Approved engineering plans illustrate approximate extent of 'cut and fill' buffers to be created across the frontage of proposed Lot 12 and that lot levels.
3. All areas and dimensions are approximate only and are subject to alteration upon Council reposition, Design and Final Survey.

CONTOUR INTERVAL: 0.25m



DISCLOSURE PLAN

PROPOSED LOT 12
THE MEADOWS
MORAYFIELD

MURRAY & ASSOCIATES
(QLD) PTY LTD AON 075 543 164
CONSULTING SURVEYORS

LAND & ENGINEERING SURVEYORS,
PLANNERS

CABOOLTURE OFFICE: 5/75 King St, Caboolture
PO Box 377, Caboolture 4510

PH 54951478 FAX 54951729



IMPORTANT NOTE: This plan has been produced for the purpose of allowing the sale of freehold and leasehold land (proposed allotments) prior to the sealing of survey plans. It should be noted that variations may arise between this disclosure plan and the sealed plan of survey. This plan is based on an approved plan of subdivision and is intended to be a true representation of this proposed allotment.

PARISH CABOOLTURE	COUNTY STANLEY	CRG.POR. 6V	LOCAL GOVT. MERC	CLIENT DODMARK PTY LTD	SCALE 1:250 AT A3	1 of 1
LEVEL DATUM AHD9 OPM No 107268 FL 10394m AHD	CCAD File No 45355 ***	DRAWN CRA	CHECKED CRA	PROJECT THE MEADOWS	PLAN No A3/ 45355	-DP12
	DRG File No DRG DW00012	DATE 15/04/08	DATE 12-6-08			

**Metes and Bounds Description
of Proposed Lot 13**

Commencing after a bearing of 232°14'45" for a distance of 128.566 metres from the North Western corner of Lot 4 on RP91130, Parish of Caboolture,
thence at a bearing of 359°58'55" for a distance of 29.145 metres
thence at a bearing of 76°53' for a distance of 7.209 metres
thence at a bearing of 85°35'15" for a distance of 7.595 metres
thence at a bearing of 90°00' for a distance of 5.406 metres
thence at a bearing of 179°58'55" for a distance of 31.366 metres
thence at a bearing of 270°00' for a distance of 20.0 metres
to the point of commencement and containing
an area of 615m² more or less.



Scale 1:250



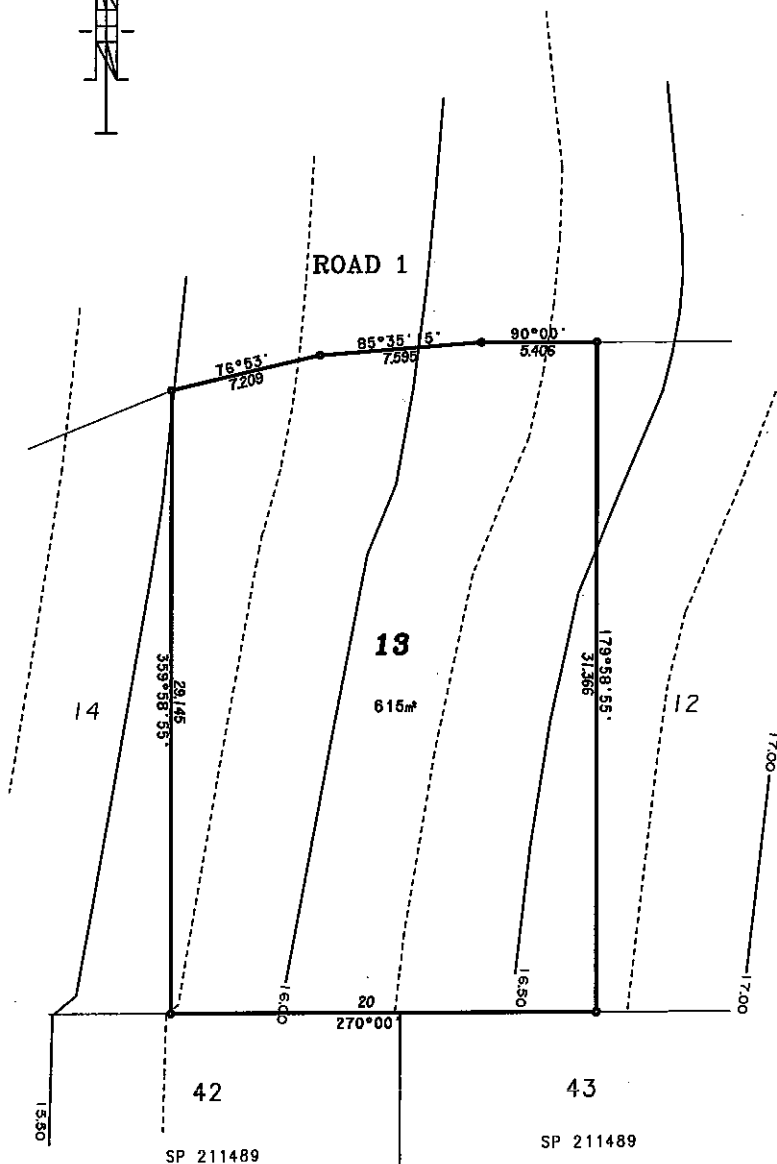
Approvals:

This plan illustrates proposed lot 13 as approved by Moreton Bay Regional Council Permit number PAL-2004-3010 and in accordance with Engineering plan numbers 07-138-01(C), 07-138-02(B), 07-138-03(C) - 04(C), 07-138-05(B), 07-138-06(A), 07-138-07(B) - 13(B), 07-138-14(A), 07-138-15(B), 07-138-20(D) - 21(D), 07-138-22(B) - 23(B) prepared by KNI GROUP PTY LTD.

Notes:

- Contours and levels shown on this plan were taken before construction.
- Approved engineering plans illustrate approximate extent of 'cut and fill' batters to be created across the frontage of proposed Lot 13 and final levels.
- All areas and dimensions are approximate only and are subject to alteration upon Council regulation, Design and Final Survey.

CONTOUR INTERVAL: 0.25m



DISCLOSURE PLAN

PROPOSED LOT 13
THE MEADOWS
MORAYFIELD

MURRAY & ASSOCIATES
(QLD) PTY LTD ACN 075 543 154
CONSULTING SURVEYORS

LAND & ENGINEERING SURVEYORS,
PLANNERS

CABOOLTURE OFFICE, 5/75 King St, Caboolture
PO Box 377, Caboolture 4510

PH 54951478 FAX 54951729



IMPORTANT NOTE: This plan has been produced for the purpose of allowing the sale of freehold and leasehold land (proposed allotments) prior to the sealing of survey plans. It should be noted that variations may arise between this disclosure plan and the sealed plan of survey. This plan is based on an approved plan of subdivision and is intended to be a true representation of this proposed allotment.

PARISH CABOOLTURE	COUNTY STANLEY	ORIGPOR. GV	LOCAL GOVT. MERC
LEVEL DATUM AHD OPM No 107268 PL 10394a AHD	CCAD File No 45355 *** DWS File No DWS DW60013	DRAWN ORA DATE 15/04/08	CHECKED ORA DATE 10-6-08

CLIENT DODMARK PTY LTD	SCALE 1:250 AT A3	1 of 1
PROJECT THE MEADOWS	PLAN No A3/ 45355	-0P13

**Metes and Bounds Description
of Proposed Lot 14**

Commencing after a bearing of 232°14'45" for a distance of 128.566 metres from the North Western corner of Lot 4 on RP91130, Parish of Caboolture,
thence at a bearing of 270°00' for a distance of 29.724 metres
thence at a bearing of 355°02'55" for a distance of 2.145 metres
thence at a bearing of 3°06'55" for a distance of 4.78 metres
thence at a bearing of 23°56'20" for a distance of 4.785 metres
thence at a bearing of 44°26'50" for a distance of 4.785 metres
thence at a bearing of 54°42'05" for a distance of 13.439 metres
thence at a bearing of 59°08'50" for a distance of 7.595 metres
thence at a bearing of 67°56'20" for a distance of 7.403 metres
thence at a bearing of 179°58'55" for a distance of 29.145 metres
to the point of commencement and containing
an area of 616m² more or less.

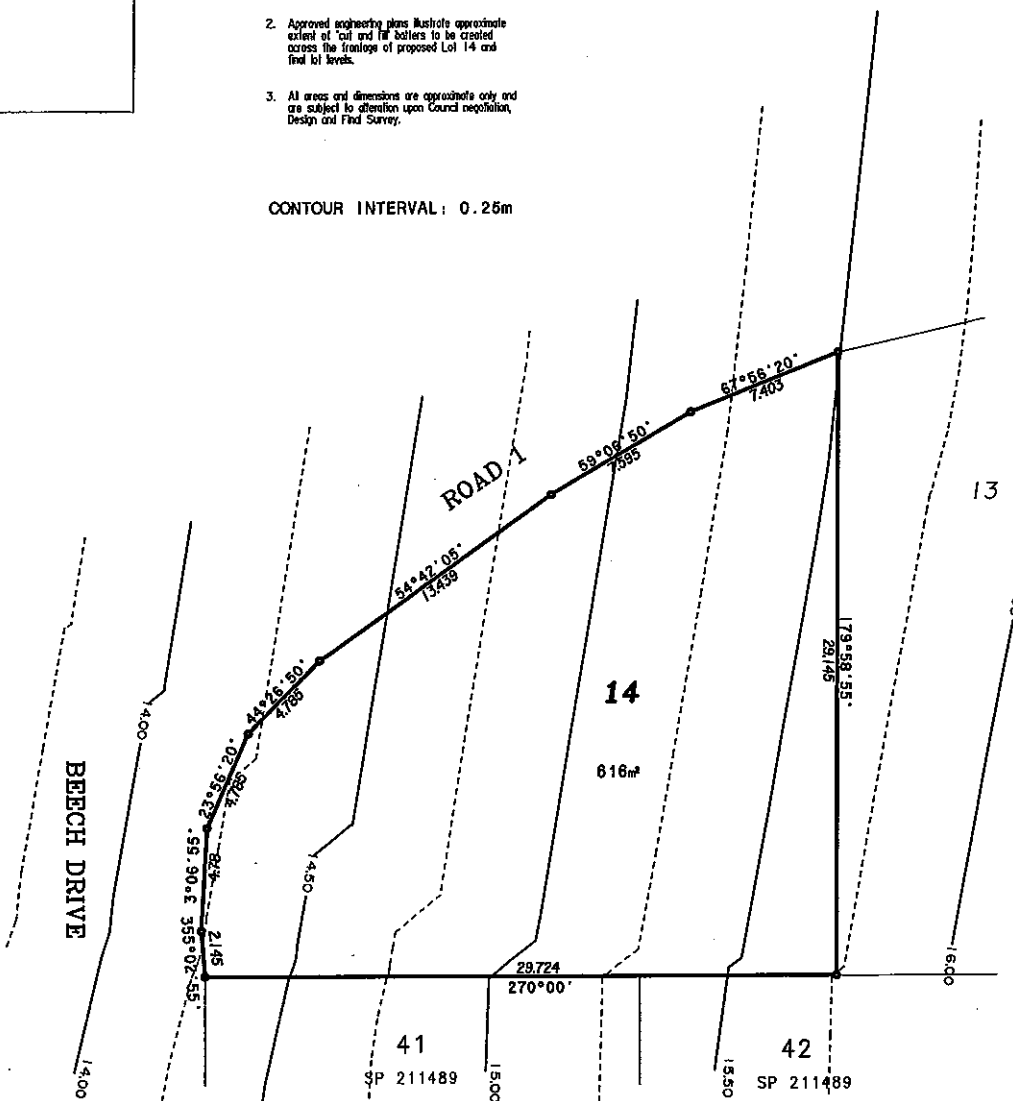


Scale 1:250

Approvals:
This plan illustrates proposed lot 14 as approved by Moreton Bay Regional Council Permit number RM-2004-3010 and in accordance with Engineering plan numbers 07-138-01(C), 07-138-02(B), 07-138-03(C) - 04(C), 07-138-05(B), 07-138-06(A), 07-138-07(B) - 13(B), 07-138-14(A), 07-138-15(B), 07-138-20(C) - 21(C), 07-138-22(B) - 23(B) prepared by KRI GROUP PTY LTD.

- Notes**
1. Contours and levels shown on this plan were taken before construction.
 2. Approved engineering plans illustrate approximate extent of 'cut and fill' ballers to be created across the fringe of proposed Lot 14 and final lot levels.
 3. All areas and dimensions are approximate only and are subject to alteration upon Council negotiation, Design and Final Survey.

CONTOUR INTERVAL: 0.25m



DISCLOSURE PLAN

PROPOSED LOT 14
THE MEADOWS
MORAYFIELD

MURRAY & ASSOCIATES
(QLD) PTY LTD AGN 075 543 154
CONSULTING SURVEYORS

LAND & ENGINEERING SURVEYORS,
PLANNERS

CABOOLTURE OFFICE: 5/75 King St, Caboolture
PO Box 377, Caboolture 4510 PH 54951478 FAX 54951729

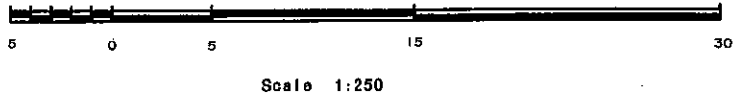


IMPORTANT NOTE: This plan has been produced for the purpose of allowing the sale of freehold and leasehold land (proposed allotment(s)) prior to the sealing of survey plans. It should be noted that variations may arise between this disclosure plan and the sealed plan of survey. This plan is based on an approved plan of subdivision and is intended to be a true representation of this proposed allotment.

PARISH CABOOLTURE	COUNTY STANLEY	ORIG.POR. SV	LOCAL GOVT. MERC	CLIENT DODMARK PTY LTD	SCALE 1:250 AT A3	1 of 1
LEVEL DATUM ADHD OPM No 107269 RL 10394m AHD	CCAD File No 45355 .###	DRAWN CRA	CHECKED <i>cnt</i>	PROJECT THE MEADOWS	PLAN No A3/ 45355	-DP14
	DATE .15/04/08		DATE 19-6-08			

**Mets and Bounds Description
of Proposed Lot 16**

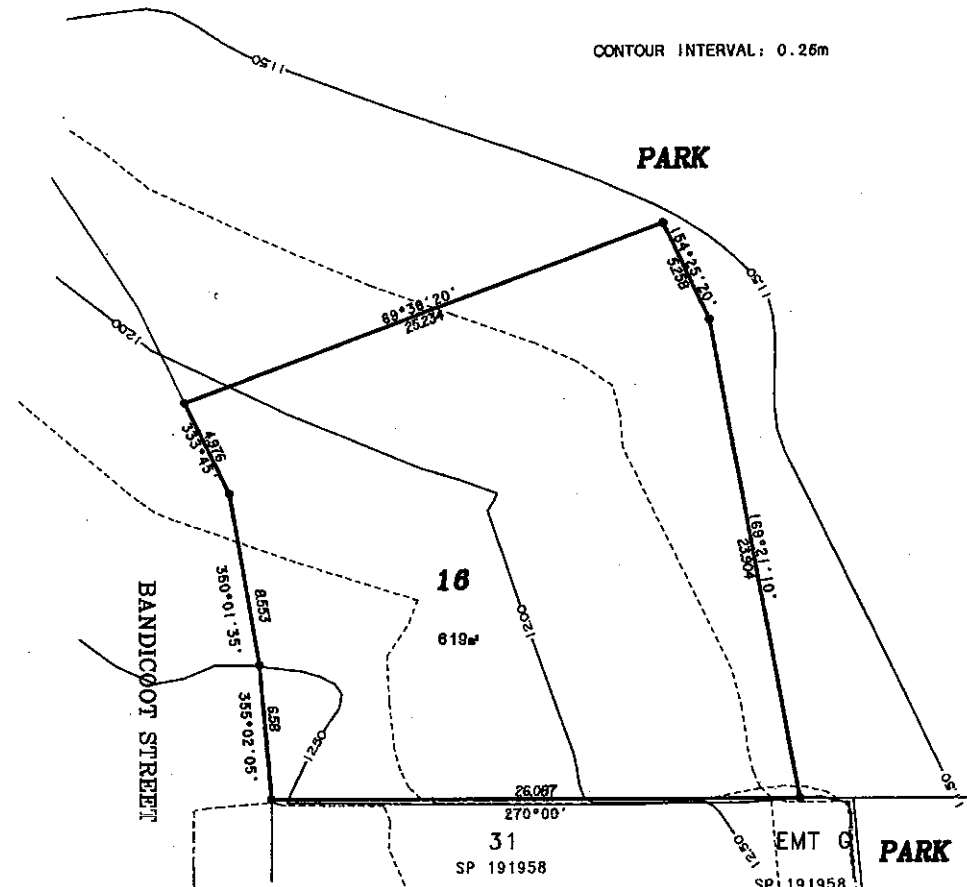
Commencing after a bearing of 90°00' for a distance of 149.074 metres from the North Western corner of Lot 14 on RP191958, Parish of Caboolture,
thence at a bearing of 355°02'05" for a distance of 6.58 metres
thence at a bearing of 350°01'35" for a distance of 8.553 metres
thence at a bearing of 333°45' for a distance of 4.976 metres
thence at a bearing of 69°38'20" for a distance of 25.234 metres
thence at a bearing of 154°28'20" for a distance of 5.258 metres
thence at a bearing of 169°21'10" for a distance of 23.904 metres
thence at a bearing of 270°00' for a distance of 26.087 metres
to the point of commencement and containing
an area of 619m² more or less.



Approvals
This plan illustrates proposed lot 16 as approved by Moray Bay Regional Council Permit number PAL-2004-3010 and in accordance with Engineering plan numbers 07-138-01(C), 07-138-02(B), 07-138-03(C) - 04(C), 07-138-05(B), 07-138-06(A), 07-138-07(B) - 15(B), 07-138-14(A), 07-138-15(B), 07-138-20(C) - 21(C), 07-138-22(B) - 23(B) prepared by KIN GROUP PTY LTD.

- Notes**
1. Contours and levels shown on this plan were taken before construction.
 2. Approved engineering plans illustrate approximate extent of 'cut' and 'fill' to be created across the frontage of proposed Lot 16 and find lot levels.
 3. All areas and dimensions are approximate only and are subject to alteration upon Council negotiation, Design and Final Survey.

CONTOUR INTERVAL: 0.26m



DISCLOSURE PLAN

PROPOSED LOT 16
THE MEADOWS
MORAYFIELD

MURRAY & ASSOCIATES
(QLD) PTY LTD
CONSULTING SURVEYORS



LAND & ENGINEERING SURVEYORS,
PLANNERS
CABOOLTURE OFFICE: 5/75 King St, Caboolture
PO Box 377, Caboolture 4510 PH 54951478 FAX 54951729

IMPORTANT NOTE: This plan has been produced for the purpose of allowing the sale of freehold and leasehold land (proposed allotments) prior to the sealing of survey plans. It should be noted that variations may arise between this disclosure plan and the sealed plan of survey. This plan is based on an approved plan of subdivision and is intended to be a true representation of this proposed allotment.

PARISH CABOOLTURE	COUNTY STANLEY	ORIG/POR. SV	LOCAL GOVT. MERC	CLIENT DODMARK PTY LTD	SCALE 1:250	AT A3	1 of 1
LEVEL DATUM AHD# OPM No 107268 PL 10.894m AHD	CCAD File No 45355 ###	DRAWN CRA	CHECKED CRA	PROJECT THE MEADOWS	PLAN No A3/ 45355	-DP16	
	DWG File No DPO DWG0016	DATE 23/09/08	DATE 23-9-08				

**Metes and Bounds Description
of Proposed Lot 17**

Commencing after a bearing of 90°00' for a distance of 92.744 metres from the North Western corner of Lot 14 on RP191958, Parish of Caboolture,
thence at a bearing of 0°00' for a distance of 32.323 metres
thence at a bearing of 90°00' for a distance of 7.356 metres
thence at a bearing of 97°30' for a distance of 8.949 metres
thence at a bearing of 112°30' for a distance of 8.42 metres
thence at a bearing of 127°30' for a distance of 8.42 metres
thence at a bearing of 142°30' for a distance of 8.42 metres
thence at a bearing of 157°30' for a distance of 8.42 metres
thence at a bearing of 171°11'30" for a distance of 8.448 metres
thence at a bearing of 270°00' for a distance of 40.33 metres
to the point of commencement and containing
an area of 1063m² more or less.



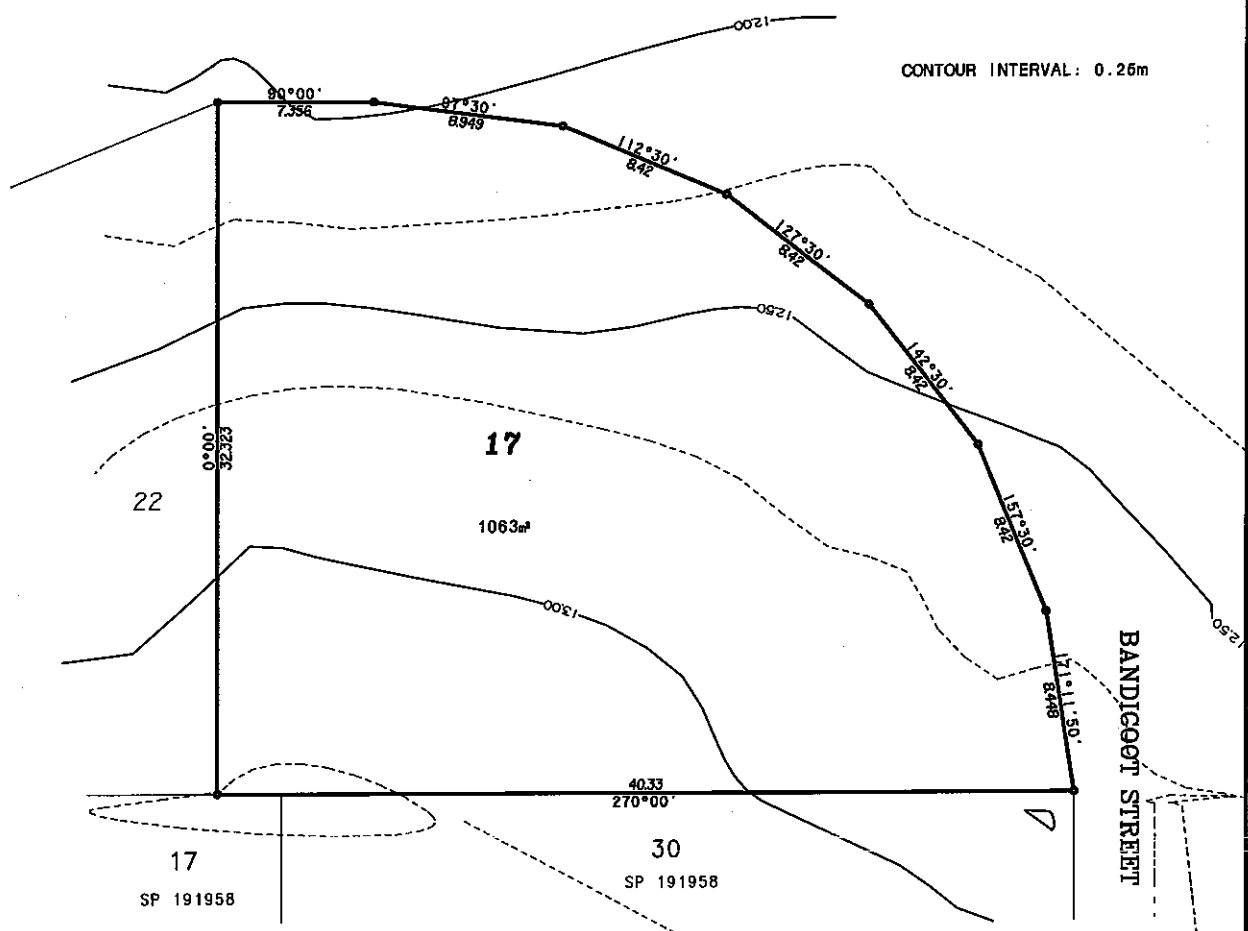
Scale 1:250

Approvals:

This plan illustrates proposed lot 17 as approved by Moreton Bay Regional Council Permit number RA1-2004-3010 and in accordance with Engineering plan numbers 07-138-01(C), 07-138-02(B), 07-138-03(C) - 04(C), 07-138-05(B), 07-138-06(A), 07-138-07(B) - 13(B), 07-138-14(A), 07-138-15(B), 07-138-20(C) - 21(C), 07-138-22(B) - 23(B) prepared by KN GROUP PTY LTD.

Notes:

1. Colours and levels shown on this plan were taken before construction.
2. Approved engineering plans illustrate approximate extent of 'cut and fill' matters to be created across the frontage of proposed Lot 17 and final lot levels.
3. All areas and dimensions are approximate only and are subject to alteration upon Council negotiation, Design and Final Survey.



DISCLOSURE PLAN

PROPOSED LOT 17
THE MEADOWS
MORAYFIELD

MURRAY & ASSOCIATES
(QLD) PTY LTD ACN 075 543 154
CONSULTING SURVEYORS

LAND & ENGINEERING SURVEYORS,
PLANNERS

CABOOLTURE OFFICE, 8/75 King St, Caboolture
PO Box 377, Caboolture 4510

PH 54351478 FAX 54351729



IMPORTANT NOTE: This plan has been produced for the purpose of allowing the sale of freehold and leasehold land (proposed allotments) prior to the sealing of survey plans. It should be noted that variations may arise between this disclosure plan and the sealed plan of survey. This plan is based on an approved plan of subdivision and is intended to be a true representation of this proposed allotment.

PARISH: CABOOLTURE	COUNTY: STANLEY	ORIGPOR: 6Y	LOCAL GOVT. MERC.	CLIENT DODMARK PTY LTD	SCALE 1:250	AT A3	1 of 1
LEVEL DATUM AHQ68 OPM No 107268 RL 10.99m AHD	CCAD File No 45355 ***	DRAWN CRA	CHECKED BH	PROJECT THE MEADOWS	PLAN No A3/ 45355	-DP17	
DATE 15/04/08	DATE 25/6/08						

**Metes and Bounds Description
of Proposed Lot 22**

Commencing after a bearing of 90°00' for a distance of 69.557 metres from the North Western corner of Lot 14 on RP191958, Parish of Caboolture,
thence at a bearing of 9°35' for a distance of 26.87 metres
thence at a bearing of 78°44'15" for a distance of 9.117 metres
thence at a bearing of 67°30'30" for a distance of 10.578 metres
thence at a bearing of 180°00' for a distance of 32.323 metres
thence at a bearing of 270°00' for a distance of 23.186 metres
to the point of commencement and containing
an area of 600m² more or less.



Scale 1:250

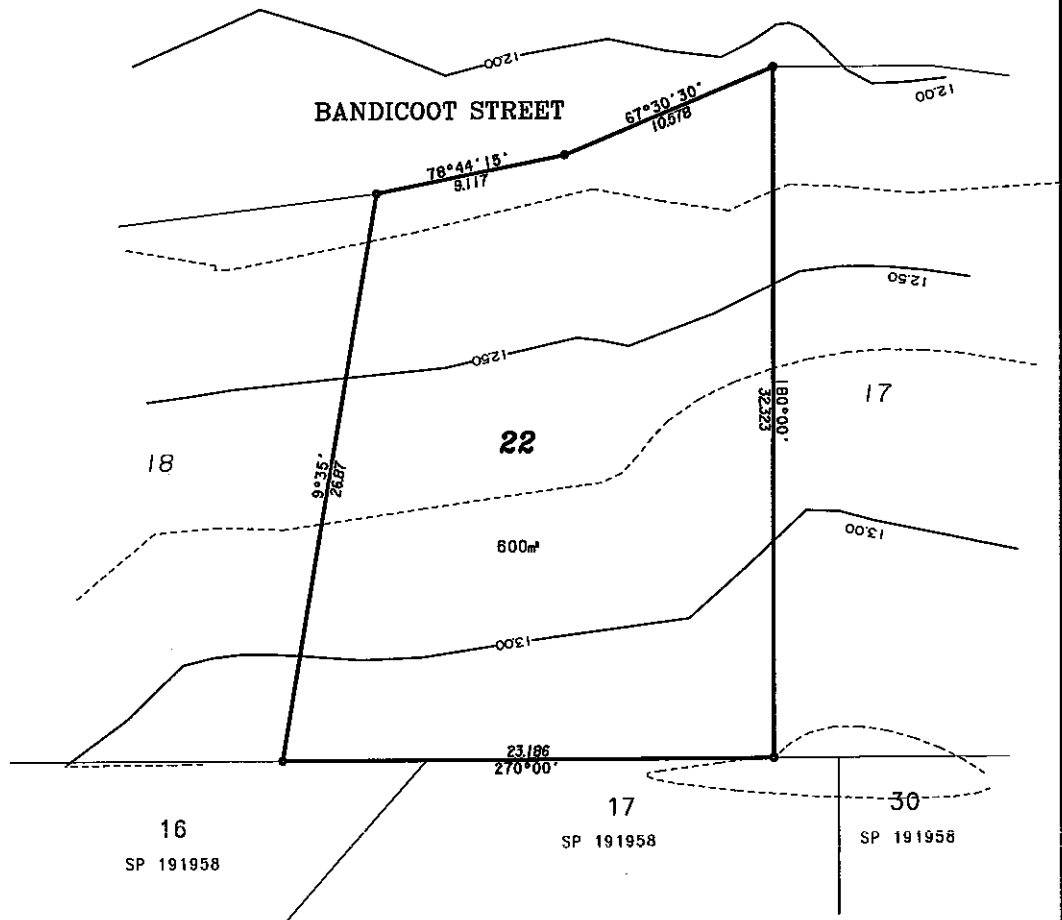
Approvals:

This plan illustrates proposed lot 22 as approved by Moreton Bay Regional Council Panel number RAL-2004-3010 and in accordance with Engineering plan numbers 07-138-01(C), 07-138-02(B), 07-138-03(C) - 04(C), 07-138-05(B), 07-138-06(A), 07-138-07(B) - 13(B), 07-138-14(A), 07-138-15(B), 07-138-20(C) - 21(H), 07-138-22(B) - 23(B) prepared by KGI GROUP PTY LTD.

Notes:

1. Contours and levels shown on this plan were taken before construction.
2. Approved engineering plans illustrate approximate extent of 'cut and fill' buffers to be created across the frontage of proposed Lot 22 and find lot levels.
3. All areas and dimensions are approximate only and are subject to alteration upon Council negotiation, Design and Final Survey.

CONTOUR INTERVAL: 0.25m



DISCLOSURE PLAN

PROPOSED LOT 22
THE MEADOWS
MORAYFIELD

MURRAY & ASSOCIATES
(QLD) PTY LTD ACN 075 543 154
CONSULTING SURVEYORS

LAND & ENGINEERING SURVEYORS,
PLANNERS

CABOOLTURE OFFICE: 5/75 King St, Caboolture
PO Box 377, Caboolture 4510

PH 54951478 FAX 54951729



IMPORTANT NOTE: This plan has been produced for the purpose of allowing the sale of freehold and leasehold land (proposed allotments) prior to the sealing of survey plans. It should be noted that variations may arise between this disclosure plan and the sealed plan of survey. This plan is based on an approved plan of subdivision and is intended to be a true representation of this proposed allotment.

PARISH CABOOLTURE	COUNTY STANLEY	ORIGPOR. 6V	LOCAL GOVT. MERC	CLIENT DODMARK PTY LTD	SCALE 1:250	AT A3	1 of 1
LEVEL DATUM AHD10 OPM No 107268 RL 10.994m AHD	CCAD File No 45355 *** DWG File No DWG DWG0018	DRAWN ORA	CHECKED <i>AB</i>	PROJECT THE MEADOWS	PLAN No A3/ 45355	-DP22	
	DATE 15/04/08	DATE 25/6/08					

**Metes and Bounds Description
of Proposed Lot 18**

Commencing after a bearing of 90°00' for a distance of 69.557 metres from the North Western corner of Lot 14 on RP191958, Parish of Caboolture,
thence at a bearing of 270°00' for a distance of 33.11 metres
thence at a bearing of 39°57'45" for a distance of 16.244 metres
thence at a bearing of 49°53'25" for a distance of 19.477 metres
thence at a bearing of 83°02'30" for a distance of 12.343 metres
thence at a bearing of 189°35' for a distance of 26.87 metres
to the point of commencement and containing
an area of 600m² more or less.



Scale 1:250

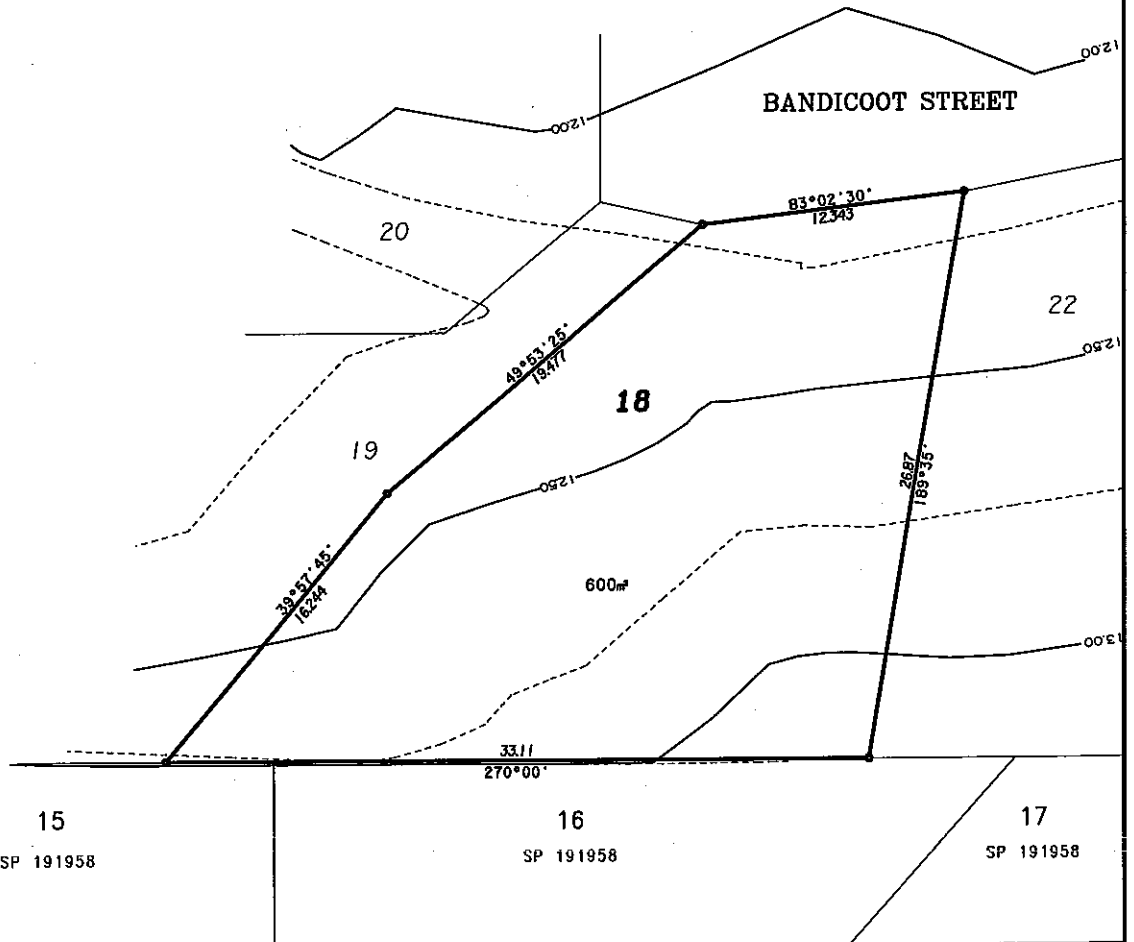
Approvals:

This plan illustrates proposed lot 18 as approved by Moreton Bay Regional Council Permit number RAL-2004-3010 and in accordance with Engineering plan numbers 07-138-01(A), 07-138-02(B), 07-138-03(C) - 04(C), 07-138-05(B), 07-138-06(A), 07-138-07(B) - 13(B), 07-138-14(A), 07-138-15(B), 07-138-20(C) - 21(C), 07-138-22(B) - 23(B) prepared by KN GROUP PTY LTD.

Notes:

1. Colours and levels shown on this plan were taken before construction.
2. Approved engineering plans illustrate approximate extent of "cut and fill" matters to be created across the frontage of proposed Lot 18 and final lot levels.
3. All areas and dimensions are approximate only and are subject to alteration upon Council negotiation, Design and Final Survey.

CONTOUR INTERVAL: 0.25m



DISCLOSURE PLAN

PROPOSED LOT 18
THE MEADOWS
MORAYFIELD

MURRAY & ASSOCIATES
(QLD) PTY LTD
CONSULTING SURVEYORS

LAND & ENGINEERING SURVEYORS,
PLANNERS

CABOOLTURE OFFICE: 5/75 King St, Caboolture
PO Box 377, Caboolture 4510

ADN 075 543 154

PH 54951478 FAX 54951729



IMPORTANT NOTE: This plan has been produced for the purpose of allowing the sale of freehold and leasehold land (proposed allotments) prior to the sealing of survey plans. It should be noted that variations may arise between this disclosure plan and the sealed plan of survey. This plan is based on an approved plan of subdivision and is intended to be a true representation of this proposed allotment.

PARISH CABOOLTURE	COUNTY STANLEY	ORIG.POR. GV	LOCAL GOVT. MERC.	CLIENT DODMARK PTY LTD	SCALE 1:250	AT A3	1 of 1
LEVEL DATUM AHD80 OPM No 107268 RL 10.994m AHD	CCAO File No 45355	DRAWN CRA	CHECKED <i>[Signature]</i>	PROJECT THE MEADOWS	PLAN No A3/ 45355	-DP18	
DATE 15/04/08	DATE 25/6/08						

**Metes and Bounds Description
of Proposed Lot 19**

Commencing from the North Western corner of Lot 14 on RP191958, Parish of Caboolture,
thence at a bearing of 37°05' for a distance of 25.07 metres
thence at a bearing of 90°00' for a distance of 34.518 metres
thence at a bearing of 50°19'50" for a distance of 9.521 metres
thence at a bearing of 102°37'40" for a distance of 4.934 metres
thence at a bearing of 229°53'25" for a distance of 19.477 metres
thence at a bearing of 219°57'45" for a distance of 16.244 metres
thence at a bearing of 270°00' for a distance of 36.448 metres
to the point of commencement and containing
an area of 789m² more or less.



Scale 1:250

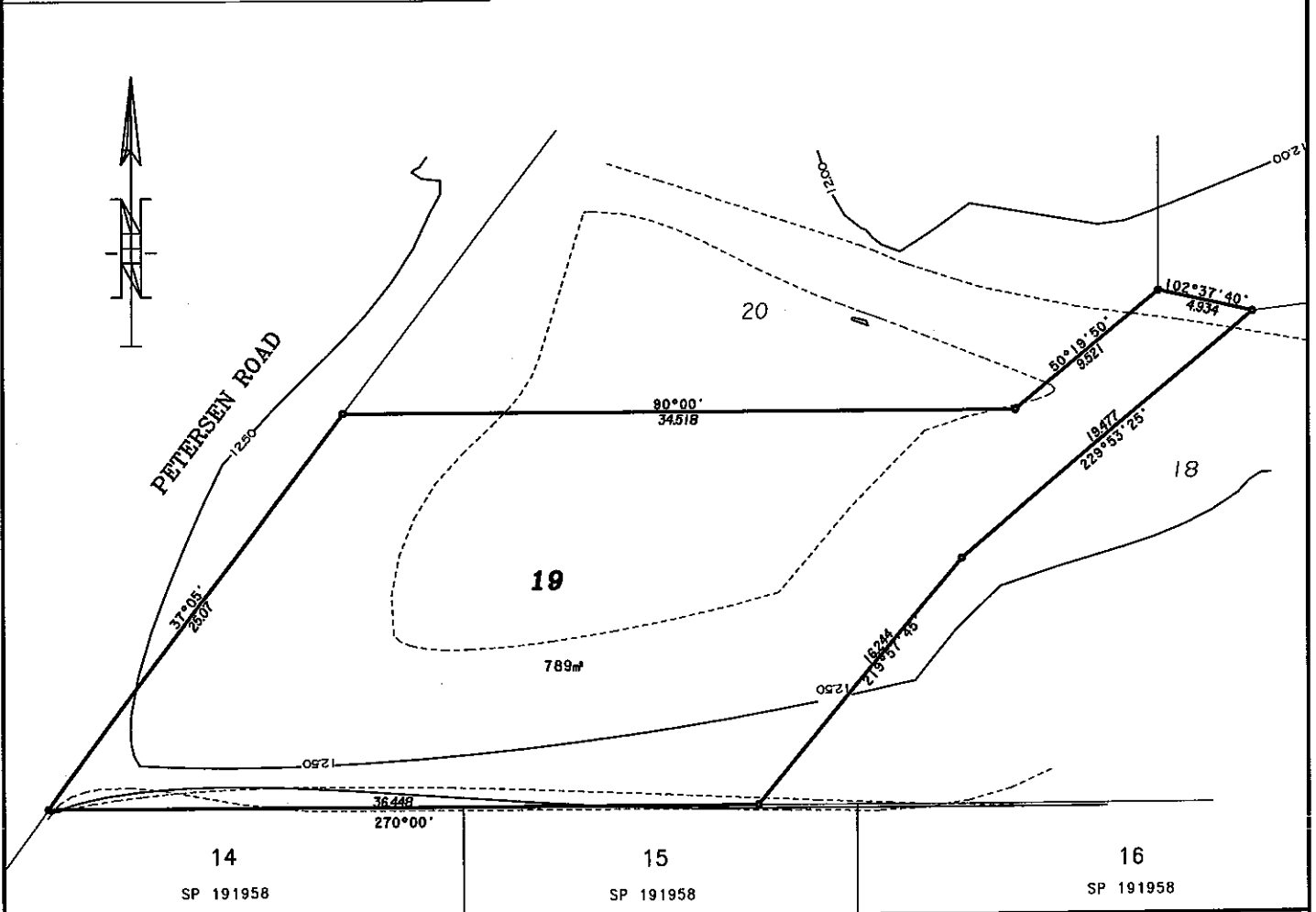
Approvals:

This plan illustrates proposed lot 19 as approved by Moreton Bay Regional Council Permit number RAL-2004-3010 and in accordance with Engineering plan numbers 07-139-0140, 07-139-0269, 07-139-0363 - 0460, 07-139-0569, 07-139-0664, 07-139-0769 - 1369, 07-139-1464, 07-139-1569, 07-139-2063 - 2163, 07-139-2269 - 2369 prepared by KN GROUP PTY LTD.

Notes:

1. Contours and levels shown on this plan were taken before construction.
2. Approved engineering plans illustrate approximate extent of cut and fill buffers to be created across the frontage of proposed Lot 19 and final lot levels.
3. All areas and dimensions are approximate only and are subject to alteration upon Council negotiation, Design and Final Survey.

CONTOUR INTERVAL: 0.25m



DISCLOSURE PLAN

PROPOSED LOT 19
THE MEADOWS
MORAYFIELD

MURRAY & ASSOCIATES
(QLD) PTY LTD ACN 075 543 154
CONSULTING SURVEYORS

LAND & ENGINEERING SURVEYORS,
PLANNERS

CABOOLTURE OFFICE: 5/75 King St, Caboolture
PO Box 377, Caboolture 4510

PH 54951478 FAX 54951729



IMPORTANT NOTE: This plan has been produced for the purpose of allowing the sale of freehold and leasehold land (proposed allotments) prior to the sealing of survey plans. It should be noted that variations may arise between this disclosure plan and the sealed plan of survey. This plan is based on an approved plan of subdivision and is intended to be a true representation of this proposed allotment.

PARISH CABOOLTURE	COUNTY STANLEY	ORGPOR. 6V	LOCAL GOVT. MERC	CLIENT DODMARK PTY LTD	SCALE 1:250 AT A3	1 of 1
LEVEL DATUM AHD08 OPM No 107268 RL 10594m AHD0	CCAD File No 45355 ***	DRAWN CRA	CHECKED <i>BM</i>	PROJECT THE MEADOWS	PLAN No A3/ 45355	-0P19
	DWG File No DWG DWG020	DATE 15/04/08	DATE 25/6/08			

**Metes and Bounds Description
of Proposed Lot 20**

Commencing after a bearing of 37°05' for a distance of 50.139 metres from the North Western corner of Lot 14 on RP191958, Parish of Caboolture,
thence of a bearing of 90°00' for a distance of 19.87 metres
thence at a bearing of 105°39' for a distance of 9.725 metres
thence at a bearing of 217°04' for a distance of 4.154 metres
thence of a bearing of 180°00' for a distance of 7.984 metres
thence of a bearing of 230°19'50" for a distance of 9.521 metres
thence of a bearing of 270°00' for a distance of 34.518 metres
thence of a bearing of 37°05' for a distance of 25.069 metres
to the point of commencement and containing
an area of 662m² more or less.



Scale 1:250

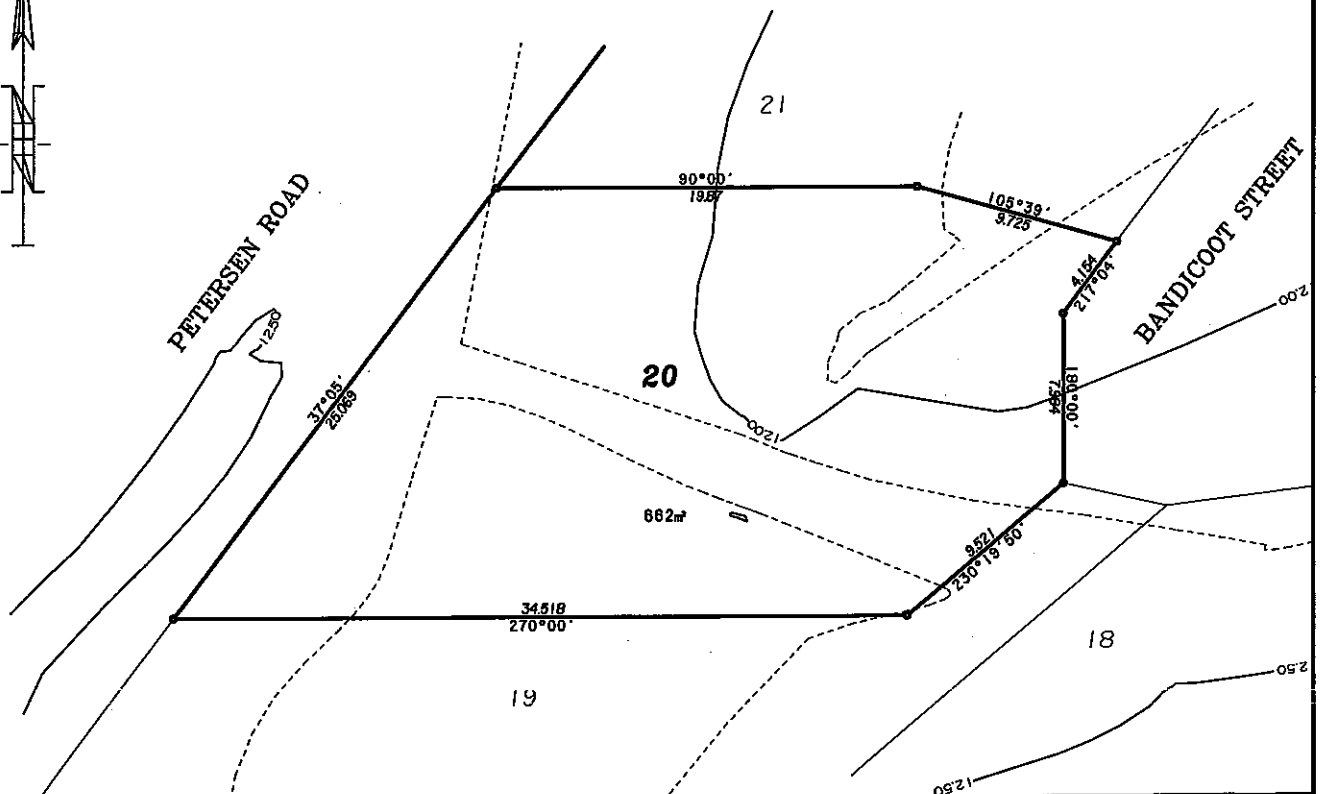
Approvals

This plan illustrates proposed lot 20 as approved by Moreton Bay Regional Council Permit number PAL-2004-3010 and in accordance with Engineering plan numbers 07-138-01(C), 07-138-02(B), 07-138-03(C) - 04(D), 07-138-05(B), 07-138-06(A), 07-138-07(B) - 13(B), 07-138-14(A), 07-138-15(B), 07-138-20(C) - 21(C), 07-138-22(B) - 23(B) prepared by KH GROUP PTY LTD.

Notes:

1. Contours and levels shown on this plan were taken before construction.
2. Approved engineering plans illustrate approximate extent of 'cut and fill' matters to be created across the frontage of proposed Lot 20 and that lot levels.
3. All areas and dimensions are approximate only and are subject to alteration upon Council negotiation, Design and Final Survey.

CONTOUR INTERVAL: 0.25m



DISCLOSURE PLAN

PROPOSED LOT 20
THE MEADOWS
MORAYFIELD

MURRAY & ASSOCIATES
(QLD) PTY LTD AON 075 543 154
CONSULTING SURVEYORS

LAND & ENGINEERING SURVEYORS,
PLANNERS

CABOOLTURE OFFICE: 5/75 King St, Caboolture
PO Box 377, Caboolture 4510

PH 54951478 FAX 54951729



IMPORTANT NOTE: This plan has been produced for the purpose of allowing the sale of freehold and leasehold land (proposed allotments) prior to the sealing of survey plans. It should be noted that variations may arise between this disclosure plan and the sealed plan of survey. This plan is based on an approved plan of subdivision and is intended to be a true representation of this proposed allotment.

PARISH CABOOLTURE	COUNTY: STANLEY	ORIG.POR. GV	LOCAL GOVT. MERC	CLIENT DODMARK PTY LTD	SCALE 1:250	AT A3	1 of 1
LEVEL DATUM AHD OPM No 107268 RL 10394m AHD	CCAD File No 45355 *** DWG File No DWG DWG0021	DRAWN CRA	CHECKED BA	PROJECT THE MEADOWS	PLAN No A3/ 45355	-DP20	
	DATE 15/04/08	DATE 25/6/08					

**Metes and Bounds Description
of Proposed Lot 21**

Commencing after a bearing of 37°05' for a distance of 50.139 metres from the North Western corner of Lot 14 on RP191958, Parish of Caboolture,
thence at a bearing of 37°05' for a distance of 32.803 metres
thence at a bearing of 119°45' for a distance of 25.104 metres
thence at a bearing of 217°04' for a distance of 20.474 metres
thence at a bearing of 285°39' for a distance of 9.725 metres
thence at a bearing of 270°00' for a distance of 19.87 metres
to the point of commencement and containing
an area of 637m² more or less.



Scale 1:250

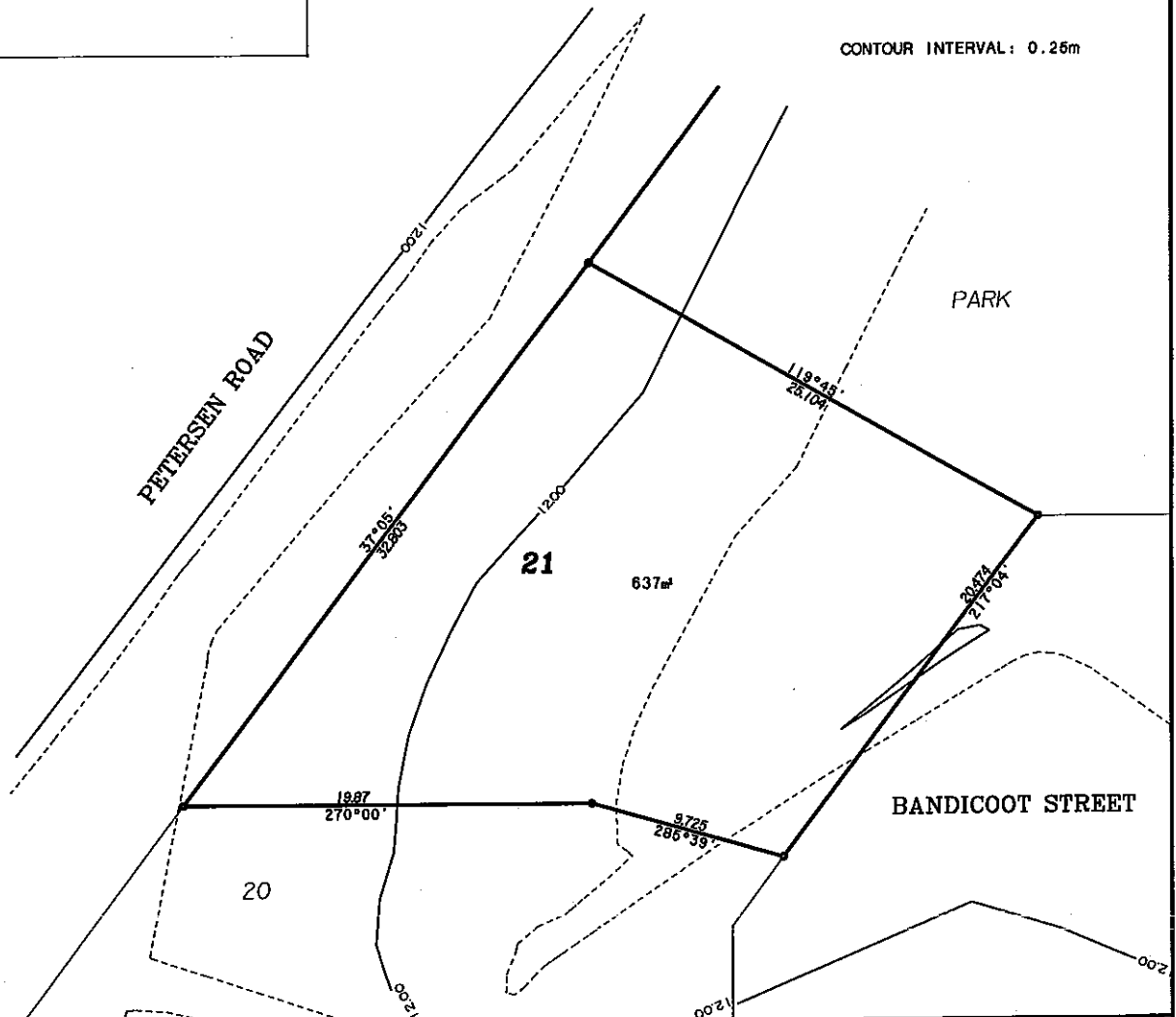
Approvals:

This plan illustrates proposed lot 21 as approved by Moreton Bay Regional Council Permit number RAJ-2004-3010 and in accordance with Engineering plan numbers 07-138-01(C), 07-138-02(B), 07-138-03(C) - 04(C), 07-138-05(B), 07-138-06(A), 07-138-07(B) - 13(B), 07-138-14(A), 07-138-15(B), 07-138-20(C) - 21(C), 07-138-22(B) - 23(B) prepared by KN GROUP PTY LTD.

Notes:

1. Contours and levels shown on this plan were taken before construction.
2. Approved engineering plans illustrate approximate extent of cut and fill to be created across the frontage of proposed Lot 21 and final lot levels.
3. All areas and dimensions are approximate only and are subject to alteration upon Council negotiation, Design and Final Survey.

CONTOUR INTERVAL: 0.26m



DISCLOSURE PLAN

PROPOSED LOT 21
THE MEADOWS
MORAYFIELD

MURRAY & ASSOCIATES
(QLD) PTY LTD ACN 075 543 154
CONSULTING SURVEYORS

LAND & ENGINEERING SURVEYORS,
PLANNERS

CABOOLTURE OFFICE: 5/75 King St, Caboolture
PO Box 377, Caboolture 4510 PH 54951478 FAX 54951729



IMPORTANT NOTE: This plan has been produced for the purpose of allowing the sale of freehold and leasehold land (proposed allotments) prior to the sealing of survey plans. It should be noted that variations may arise between this disclosure plan and the sealed plan of survey. This plan is based on an approved plan of subdivision and is intended to be a true representation of this proposed allotment.

PARISH CABOOLTURE	COUNTY STANLEY	ORIG.POR. 6V	LOCAL GOVT. MERIC	CLIENT DODMARK PTY LTD	SCALE 1:250 AT A3	1 of 1
LEVEL DATUM AHD08 OPM No 107268 RL 10.994m AHD	CCAD File No 45355 ***	DRAWN CRA	CHECKED AAB	PROJECT THE MEADOWS	PLAN No A3/ 45355	-0P21
	DRG File No DNG DWG0022	DATE 15/04/08	DATE 25/4/08			